

Nagyvadgazdálkodási adatok: Országos összesen

Év	Gimzarvas becsült állomány				Gimelhullás	Gimzarvas teríték				Dámszarvas		Őz becsült állomány				Őzelhullás	Őzteríték				Muflon		Vaddisznó	
	bika	tehén	borjú	összesen		bika	tehén	borjú	összesen	becslés	teríték	bak	suta	gida	összesen		bak	suta	gida	összesen	becslés	teríték	becslés	teríték
1960	16,733	3,800	900	100	68,800	3,700	1,400	200	8,300	3,900
1961	10,200	4,700	300	71,575	4,700	1,200	..	8,909	4,200
1962	16,350	5,400	400	380	75,100	5,300	1,200	220	9,543	5,212
1963	17,483	5,431	1,590	..	24,850	33,430	10,170	68,450	..	2,514	3,454	3,474	9,442	1,360	..	8,959	5,602
1964	20,871	5,394	1,814	468	26,470	35,820	14,490	76,780	..	2,284	2,812	2,572	7,668	1,140	..	9,674	4,707
1965	21,000	6,500	1,820	500	30,470	39,550	18,360	88,380	..	2,450	2,916	2,565	7,931	1,030	100	9,422	5,192
1966	20,800	6,700	1,550	..	33,370	43,690	19,440	96,500	..	2,940	3,820	2,640	9,400	1,530	..	10,300	5,800
1967	21,800	5,600	1,580	350	37,130	47,130	23,310	107,570	..	3,530	5,590	2,940	12,060	1,740	200	12,220	7,100
1968	24,980	6,804	1,920	400	39,850	52,480	26,290	118,620	..	4,700	6,470	3,810	14,980	2,680	250	13,287	8,203
1969	29,605	..	2,638	3,150	2,347	8,135	2,275	395	46,570	59,780	29,613	135,963	..	6,147	8,440	3,619	18,206	2,598	297	13,969	7,342
1970	11,850	14,180	6,560	32,590	..	2,926	3,667	2,468	9,061	2,443	659	47,010	63,150	31,120	141,280	..	6,731	9,376	3,506	19,613	2,319	166	15,669	8,992
1971	13,285	15,116	7,638	36,039	..	3,490	5,241	3,138	11,869	2,628	470	49,835	66,549	32,484	148,868	..	8,144	12,944	4,822	25,910	2,396	130	16,473	12,076
1972	14,555	15,735	8,199	38,489	..	3,967	6,867	3,595	14,429	3,094	758	53,859	72,382	37,104	163,345	..	9,384	14,945	5,105	29,434	2,730	138	16,926	13,945
1973	14,781	16,114	8,332	39,227	..	4,362	7,323	4,308	15,993	3,140	1,185	58,536	75,567	39,015	173,118	..	11,958	23,917	9,247	45,122	3,174	328	17,419	14,288
1974	14,506	15,202	8,093	37,801	..	4,548	6,756	4,106	15,410	3,370	958	58,886	75,128	38,485	172,499	..	13,708	19,344	7,742	40,794	3,748	391	16,979	12,895
1975	14,723	16,016	7,926	38,665	..	4,886	7,340	4,416	16,642	4,232	1,420	60,757	76,780	40,247	177,784	..	15,900	26,643	11,794	54,337	4,293	583	16,569	14,050
1976	14,102	15,507	7,948	37,557	..	5,568	7,653	4,799	18,020	4,690	1,375	63,994	78,824	41,599	184,417	..	20,331	26,965	12,424	59,720	4,308	664	18,096	17,150
1977	14,361	15,795	8,069	38,225	..	5,767	8,363	5,027	19,157	4,554	2,143	64,562	78,459	42,443	185,464	..	20,545	28,760	13,119	62,424	4,917	1,043	18,672	18,906
1978	14,558	16,285	8,340	39,183	..	6,000	7,997	5,075	19,072	4,554	2,591	67,543	81,889	45,143	194,575	..	20,526	27,850	12,965	61,341	5,025	818	18,697	19,018
1979	15,097	16,019	8,300	39,416	..	6,966	9,259	6,485	22,710	5,713	2,221	68,100	81,915	44,884	194,899	..	23,376	32,439	16,436	72,251	5,575	1,119	20,354	20,729
1980	13,930	15,144	7,881	36,955	..	6,176	7,661	5,780	19,617	5,696	1,585	64,397	76,745	43,781	184,923	..	20,258	20,789	10,096	51,143	5,238	960	20,397	20,241
1981	15,172	17,079	9,011	41,262	..	6,334	7,500	5,382	19,216	5,822	1,326	64,498	78,989	44,952	188,439	..	18,720	17,982	9,469	46,171	5,362	886	23,090	23,242
1982	15,917	17,624	9,295	42,836	..	6,275	7,733	5,761	19,769	6,379	1,169	66,491	82,035	48,405	196,931	..	17,775	15,799	9,075	42,649	6,171	896	24,411	24,620
1983	16,503	18,304	10,225	45,032	..	7,034	8,967	6,274	22,275	7,774	1,683	70,067	84,968	50,967	206,002	..	17,680	15,953	10,039	43,672	7,008	854	26,261	33,780
1984	17,036	19,479	10,960	47,475	..	6,897	9,276	7,095	23,268	9,765	2,380	74,684	89,655	55,229	219,568	..	18,967	13,703	8,632	41,302	7,100	1,179	31,279	34,101
1985	18,745	21,399	12,105	52,249	..	7,799	12,154	9,878	29,831	11,502	3,394	76,020	92,901	56,578	225,499	..	18,820	13,941	8,774	41,535	7,904	1,469	31,751	35,774
1986	19,492	22,690	12,458	54,640	1,793	8,139	12,606	10,523	31,268	13,739	3,555	75,099	93,690	58,164	226,953	14,055	18,191	12,566	7,896	38,653	8,609	1,500	33,074	35,751
1987	18,532	20,778	12,247	51,557	1,515	7,736	10,360	9,090	27,186	12,787	2,880	71,215	90,150	54,837	216,202	12,356	17,754	9,860	6,386	34,000	9,280	1,654	31,688	34,675
1988	18,717	20,289	11,719	50,725	1,557	8,323	10,372	8,727	27,422	12,811	2,455	69,404	88,501	55,629	213,534	9,147	16,687	9,751	6,929	33,367	9,496	1,915	33,813	40,219
1989	18,980	20,354	11,976	51,310	1,551	9,081	11,849	9,585	30,515	13,804	3,367	73,014	92,986	62,559	228,559	7,604	16,495	11,750	8,068	36,313	9,631	2,353	37,060	40,908
1990	20,172	21,962	12,991	55,125	1,526	9,716	13,342	12,182	35,240	14,259	4,621	76,121	96,975	63,143	236,239	8,161	18,948	13,565	8,981	41,494	10,679	2,976	38,826	46,672
1991	58,367	2,185	9,477	13,726	13,546	36,749	18,019	6,205	246,793	7,883	19,720	14,304	9,981	44,005	10,519	2,812	43,531	43,768
1992	53,813	1,888	9,455	11,716	11,616	32,787	16,536	6,463	241,036	7,852	20,255	13,090	9,167	42,512	9,166	2,408	42,055	42,895
1993	54,313	2,099	7,886	10,697	11,376	29,959	18,870	7,456	225,196	7,722	17,945	11,279	8,382	37,606	9,435	2,568	44,008	42,851
1994	51,689	2,009	7,315	8,077	8,551	23,943	16,877	6,493	235,927	..	16,343	12,607	9,851	38,801	8,457	1,803	42,329	33,451
1995	50,063	1,755	6,281	7,458	8,086	21,825	15,975	5,462	233,367	7,176	15,808	11,534	10,548	37,890	8,502	2,344	39,389	34,979
1996	18,145	22,099	14,144	54,388	1,643	5,296	7,147	7,985	20,428	16,069	4,389	79,560	98,797	67,242	245,599	9,123	15,596	10,814	9,013	35,423	9,398	2,080	43,104	35,053
1997	23,134	29,818	18,733	71,685	1,432	5,118	7,064	7,510	19,692	14,126	4,722	76,365	97,366	63,842	237,573	6,402	14,340	10,564	9,577	34,481	10,661	1,464	58,900	38,126
1998	24,268	30,103	19,682	74,053	1,548	5,665	6,778	7,662	20,105	20,637	5,460	85,847	107,488	75,725	269,060	6,980	15,961	11,249	10,684	37,894	9,961	2,002	65,621	48,481
1999	24,519	30,057	19,927	74,503	1,750	6,638	8,116	9,430	24,184	20,259	5,480	88,366	110,135	75,648	274,149	8,728	17,185	13,391	13,861	44,437	9,570	2,615	68,680	58,368
2000	26,180	30,945	20,633	77,758	1,838	7,967	9,918	11,027	28,912	20,645	5,976	95,821	115,995	81,938	293,754	8,627	20,486	15,863	16,405	52,754	10,493	2,332	76,054	67,745
2001	27,895	32,535	22,162	82,592	2,053	8,443	12,978	12,627	34,048	20,943	6,652	100,900	120,891	86,016	307,807	8,759	22,854	19,258	19,739	61,851	9,938	2,674	82,433	88,297
2002	28,258	32,091	22,223	82,572	2,592	9,390	15,919	16,393	41,702	22,107	9,004	105,009	124,094	90,450	319,553	13,568	26,211	22,403	23,838	72,452	9,577	3,723	91,071	93,962
2003	28,305	32,181	22,137	82,623	2,639	9,943	16,833	16,448	43,224	20,933	8,437	107,853	126,084	90,477	324,414	12,654	28,744	23,658	24,443	76,854	9,337	2,936	86,637	81,468
2004	26,889	30,375	21,278	78,542	2,603	9,614	15,549	16,053	41,216	20,577	9,113	107,118	126,149	87,592	320,859	11,684	29,915	27,362	28,662	85,939	7,875	2,829	77,773	86,770
2005	25,631	28,376	20,123	74,130	2,487	9,457	13,431	13,809	36,697	21,620	8,903	105,762	122,756	87,639	316,157	12,287	32,513	27,409	29,998	89,920	8,288	2,781	78,143	79,519
2006	24,207	25,966	19,021	69,184	2,288	9,194	11,372	11,391	31,957	21,791	8,403	104,596	119,685	86,571	310,852	10,681	31,							

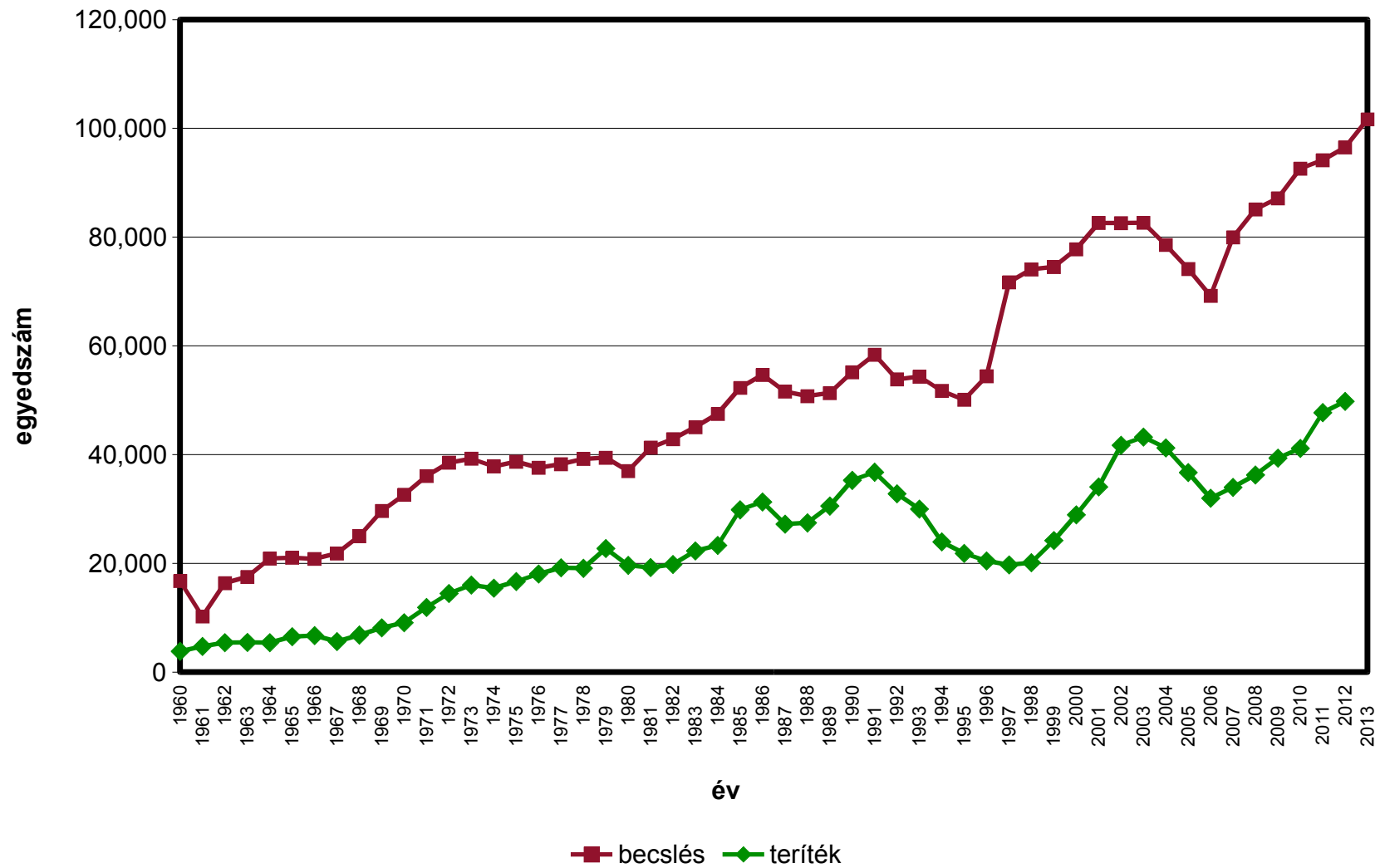
Ápróvadgazdálkodási adatok: Országos összesen

Év	Mezei nyúl				Fácán				Fogoly			Erdei szalonka	Vadrécék összesen	Vadludak összesen	Kóbor kutya	Kóbor macska	Vörös róka	Dolmányos varjú	Vestési varjú	Szarka lelövés	Szájgó lelövés	VGE	Hivatásos vadász	Sportvadász	
	becslés	befogás	lelövés	hasznosítás	becslés	kibocsátás	befogás	lelövés	hasznosítás	becslés	kibocsátás	teríték													
1960	1,238,240	508,840	382,550	97,116	758,890	..	9,832	703	937	19,181	
1961	1,375,540	527,941	481,200	129,466	1,008,540	..	70,598	740	879	17,773	
1962	1,501,900	574,228	610,300	169,081	1,193,200	..	135,106	751	..	19,898	
1963	1,037,182	487,240	574,923	150,767	895,956	..	133,196	739	966	19,245	
1964	1,029,420	402,812	656,336	170,082	696,758	..	78,316	743	1,039	19,474	
1965	1,108,100	408,488	771,900	187,463	725,800	..	48,654	730	1,044	18,685	
1966	971,300	351,076	725,200	144,913	577,400	..	32,201	1,028	18,685	
1967	1,001,760	887,000	588,000	18,685	
1968	951,102	95,222	268,710	363,932	942,299	158,448	37,799	228,401	266,200	498,302	5,692	26,846	20,607	
1969	974,195	104,425	207,421	311,846	1,062,389	258,656	56,335	272,707	329,042	562,255	8,295	60,648	..	51,451	..	35,438	36,294	31,393	65,012	..	133,083	21,713	691	1,108	20,607
1970	936,964	106,198	189,112	295,310	1,277,262	477,004	68,596	424,162	492,758	585,167	14,531	75,006	1,867	77,528	4,952	43,364	42,397	28,356	70,628	..	144,452	26,426	696	1,164	20,690
1971	846,931	101,820	100,639	202,459	1,538,767	533,701	103,240	593,171	696,411	670,843	20,344	94,080	1,539	78,080	3,264	41,495	47,324	31,459	86,670	..	165,297	29,781	749	1,186	21,655
1972	932,200	120,942	96,769	217,711	1,842,031	652,720	74,862	626,110	700,972	788,842	22,812	92,423	1,486	94,460	3,402	44,887	51,014	29,015	85,679	..	184,016	31,355	757	1,258	23,148
1973	1,009,572	163,712	133,875	297,587	2,082,364	663,118	101,220	953,234	1,054,454	790,781	15,895	93,725	1,731	89,775	4,000	48,881	56,278	26,253	95,581	101,430	197,545	25,580	758	1,265	23,969
1974	1,137,802	154,985	187,300	342,285	2,356,525	664,922	62,874	735,921	798,795	857,853	8,444	76,839	1,037	92,822	3,590	50,905	57,810	24,017	92,419	140,161	180,041	28,762	756	1,170	25,086
1975	1,149,492	192,426	173,769	366,195	2,100,646	750,759	71,117	912,202	983,319	771,106	10,208	58,639	1,799	129,674	4,924	52,350	61,178	25,434	84,852	124,773	165,145	25,775	754	1,337	26,080
1976	1,016,683	159,804	137,902	297,706	2,361,760	856,597	80,036	923,671	1,003,707	628,419	5,320	41,148	1,328	144,845	5,503	59,447	58,951	24,933	86,460	151,231	161,589	25,871	752	1,399	27,066
1977	978,212	162,302	131,347	293,649	2,340,421	1,232,558	104,729	1,102,625	1,207,354	488,156	3,335	31,878	1,791	166,441	5,425	53,603	64,709	25,224	82,651	162,385	137,945	31,992	752	1,390	27,769
1978	929,648	128,164	96,799	224,963	2,428,382	1,161,511	68,212	937,399	1,005,611	358,469	8,906	12,933	1,676	166,788	6,046	57,694	71,493	27,533	83,572	215,410	134,672	31,385	748	1,420	28,598
1979	780,167	115,318	35,824	151,142	2,018,928	1,225,547	68,424	863,409	931,833	250,848	5,982	3,279	1,482	166,957	5,413	57,381	64,659	29,060	74,170	168,628	114,405	29,242	749	1,509	29,122
1980	705,771	93,753	50,777	144,530	1,838,431	1,363,720	66,606	742,264	808,870	174,380	5,225	240	1,732	142,399	5,398	55,246	63,746	28,978	69,642	196,470	118,068	27,543	753	1,498	29,626
1981	673,034	108,662	60,806	169,268	1,647,706	1,292,119	96,184	870,233	966,417	123,219	2,802	204	1,716	181,946	6,210	55,779	71,530	32,719	59,797	161,204	109,545	32,060	745	1,451	30,124
1982	693,463	105,065	63,753	168,818	1,652,631	1,350,902	60,989	851,221	912,210	119,259	3,056	560	1,719	174,069	7,443	55,513	69,608	29,242	64,543	155,693	106,265	34,730	746	1,538	30,702
1983	704,490	113,760	74,463	188,223	1,529,494	1,004,116	75,264	906,071	981,335	110,705	1,358	548	2,096	140,988	6,803	56,173	73,972	29,985	66,455	146,107	108,889	33,056	750	1,463	31,201
1984	771,252	118,977	91,523	210,500	1,575,369	1,040,976	50,756	723,463	774,219	111,569	3,560	254	2,028	160,239	7,228	55,082	69,350	31,419	60,919	135,061	101,503	30,674	755	1,471	31,820
1985	784,837	125,761	97,584	223,345	1,274,181	1,352,053	46,429	668,111	714,540	92,894	4,222	605	1,962	181,142	11,380	52,466	67,411	31,638	62,734	139,614	95,470	24,216	767	1,438	32,731
1986	746,216	88,990	94,398	183,388	1,202,475	1,499,081	68,918	755,678	824,596	74,224	1,216	653	2,600	223,867	8,907	53,969	71,669	34,039	61,264	124,803	84,963	22,308	776	1,341	33,861
1987	649,919	63,103	92,760	155,863	1,164,786	1,373,624	43,961	701,737	745,698	60,905	6,640	2,017	1,676	220,739	7,258	53,626	66,686	29,491	64,026	121,875	80,258	24,019	795	1,408	35,358
1988	607,137	67,080	106,884	173,964	1,023,619	1,760,680	65,715	859,585	925,300	46,103	11,876	2,383	2,350	259,868	6,995	50,419	66,295	29,330	57,137	107,534	79,096	27,460	811	1,346	36,807
1989	643,580	60,812	129,515	190,327	1,137,100	1,745,330	27,581	888,100	915,681	52,510	14,707	2,734	2,223	277,202	5,314	50,677	69,716	31,697	55,048	81,664	67,801	24,611	847	1,444	39,007
1990	616,038	47,716	123,845	171,561	1,099,266	1,794,238	75,422	812,239	887,661	50,516	16,146	4,045	1,982	243,210	5,106	49,168	67,957	32,370	47,733	72,804	67,591	22,525	868	1,313	39,541
1991	640,158	32,353	142,187	174,540	1,036,697	1,749,506	41,914	672,249	714,163	51,246	17,086	4,470	2,082	98,370	5,745	53,435	62,896	29,892	43,996	61,234	61,604	22,360	948	0	42,478
1992	581,320	33,011	148,452	181,463	835,279	1,317,530	13,343	640,174	653,517	50,435	14,381	3,495	2,865	90,711	5,338	47,649	57,739	31,997	43,814	58,603	59,689	24,791	987	0	40,959
1993	589,118	40,987	127,408	168,395	831,122	1,406,516	20,510	537,146	557,656	55,840	10,165	2,289	2,865	66,303	4,692	43,966	50,594	28,856	38,772	45,736	57,819	22,424	987	0	44,359
1994	570,221	53,313	131,858	185,171	672,228	1,274,129	21,185	526,886	548,071	59,676	10,893	2,332	3,823	83,559	6,407	46,306	53,541	32,767	41,232	47,787	55,752	23,063	987	0	46,411
1995	597,543	56,977	132,449	189,426	784,521	960,755	7,690	543,474	551,164	73,155	5,667	3,103	6,206	71,056	5,622	43,950	51,150	36,106	33,805	47,670	62,827	24,384	987	0	48,561
1996	602,279	43,504	96,418	139,922	821,439	924,010	1,103	404,355	405,458	103,419	3,703	2,203	6,081	60,021	5,893	39,803	45,603	33,536	29,358	42,938	56,465	22,728	987	0	47,000
1997	475,133	41,436	97,067	138,503	645,495	872,653	2,444	491,511	493,955	62,723	5,960	1,840	5,156	67,923	5,038	37,009	41,552	41,702	29,307	35,681	56,288	21,162	1,135	0	47,000
1998	521,132	30,566	79,639	110,205	764,316	897,426	762	433,280	434,042	73,284	4,148	1,391	6,390	66,357	5,909	35,641	38,812	44,668	27,868	32,386	49,303	21,281	1,145	2,907	47,806
1999	463,270	46,409	83,340	129,749	686,077	1,076,170	4,136	546,199	550,335	63,648	8,286	1,802	8,333	90,122	7,235	35,376	37,343	54,678	25,011	30,378	45,107	23,175	1,155	2,990	48,637
2000	514,765	47,693	85,223	132,916	789,839	849,571	9,221	430,384	439,605	65,852	4,090	1,246	7,643	89,850	6,435	32,357	32,882	59,816	22,400	15,803	36,464	20,823	1,165	3,109	50,032
2001	521,831	70,344	100,488	170,832	698,704	798,056	1,156	535,714	536,870	52,028	4,015	1,425	9,538	85,896	4,302	31,264	36,913	63,509	19,776	2,802	32,014	17,861	1,178	3,227	50,886
2002	582,456	43,239	132,076	175,315	824,812	781,269	87	558,383	558,470	51,400	6,041	2,173	7,640	60,475	3,809	30,907	38,249	75,541							

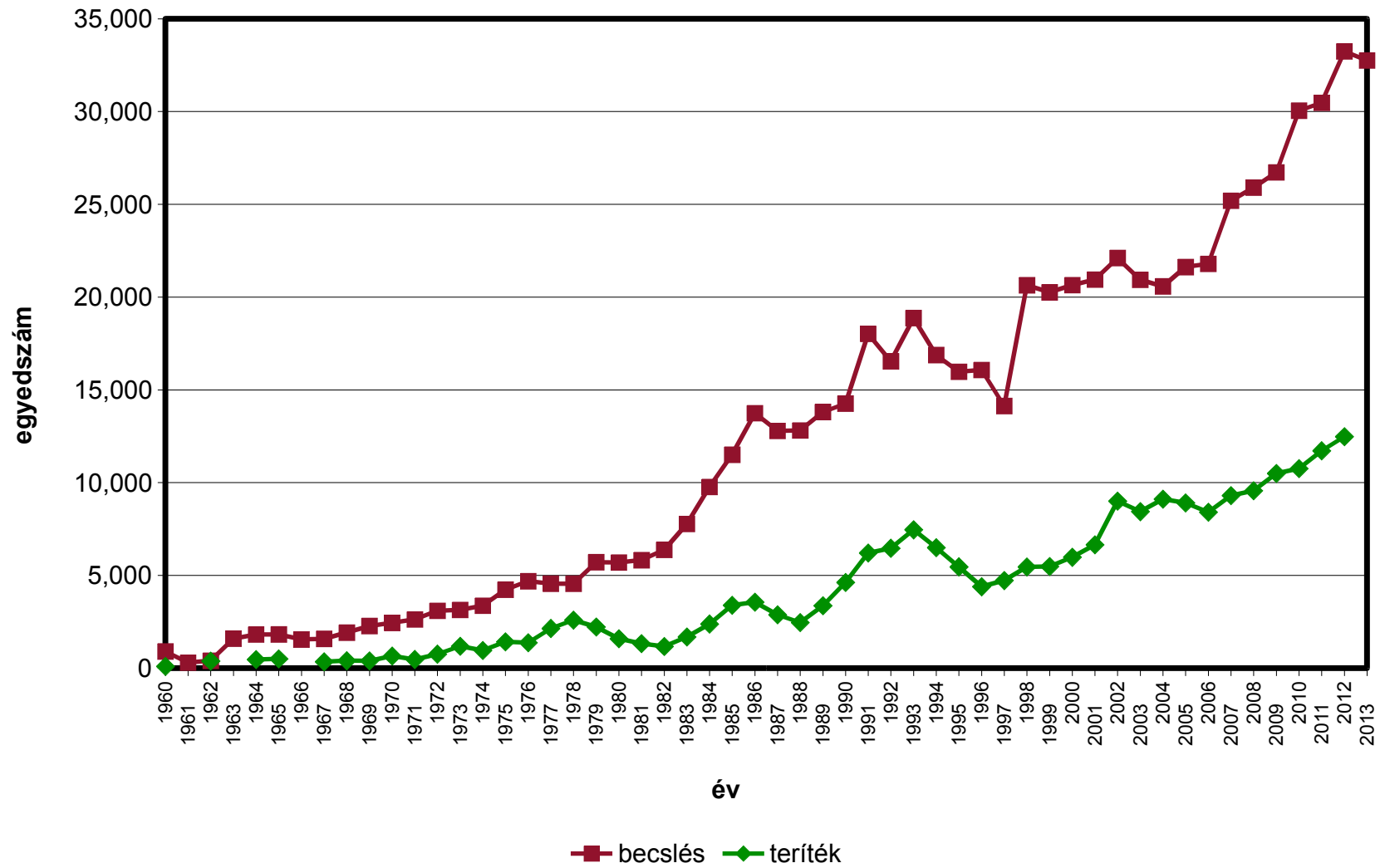
**A trófeabírálat országos összesített adatai
1970–2012**

Év	Szarvas					D á m					Ő z					M u f l o n					V a d k a n				
	Példány	Arany	Ezüst	Bronz	Érmes %	Példány	Arany	Ezüst	Bronz	Érmes %	Példány	Arany	Ezüst	Bronz	Érmes %	Példány	Arany	Ezüst	Bronz	Érmes %	Példány	Arany	Ezüst	Bronz	Érmes %
1970	2,697	117	417	584	41.5%	73	12	5	10	37.0%	6,093	116	183	249	9.0%	63	6	8	14	44.4%	284	9	9	20	13.4%
1971	3,118	136	470	702	41.9%	98	17	5	11	33.7%	7,136	56	142	191	5.5%	38	1	4	6	28.9%	514	20	18	42	15.6%
1972	3,589	160	495	792	40.3%	122	21	21	17	48.4%	8,568	145	301	334	9.1%	40		3	8	27.5%	440	11	7	25	9.8%
1973	4,039	185	553	866	39.7%	119	31	13	18	52.1%	11,003	122	259	327	6.4%	76	5	12	13	39.5%	321	4	10	17	9.7%
1974	4,324	195	544	841	36.5%	151	39	20	22	53.6%	12,562	183	382	499	8.5%	82	3	13	13	35.4%	423	8	13	27	11.3%
1975	4,634	203	601	936	37.5%	210	42	9	50	48.1%	14,929	284	450	606	9.0%	134	9	18	19	34.3%	216	7	12	15	15.7%
1976	5,506	278	685	958	34.9%	228	14	13	38	28.5%	19,262	222	518	694	7.4%	245	12	19	41	29.4%	503	8	18	24	9.9%
1977	5,534	286	788	1,049	38.4%	296	44	19	52	38.9%	19,950	274	475	673	7.1%	229	7	24	42	31.9%	1,103	24	32	89	13.1%
1978	5,822	257	770	1,062	35.9%	577	61	35	90	32.2%	19,659	155	389	523	5.4%	310	20	19	45	27.1%	673	8	17	38	9.4%
1979	7,088	267	766	1,245	32.1%	701	74	45	99	31.1%	22,778	175	420	562	5.1%	402	20	26	66	27.9%	844	13	22	58	11.0%
1980	6,187	281	749	1,044	33.5%	621	59	53	111	35.9%	19,765	194	385	625	6.1%	360	22	43	62	35.3%	878	16	32	67	13.1%
1981	6,195	238	699	1,105	33.0%	385	39	28	71	35.8%	18,699	295	668	851	9.7%	359	17	32	60	30.4%	1,028	15	35	84	13.0%
1982	5,826	273	752	1,052	35.7%	379	30	40	57	33.5%	17,642	171	480	703	7.7%	272	12	30	53	34.9%	692	16	26	59	14.6%
1983	6,941	238	786	1,293	33.4%	436	50	30	85	37.8%	17,747	214	442	691	7.6%	363	20	49	71	38.6%	1,064	14	21	80	10.8%
1984	6,802	243	811	1,214	33.3%	507	38	43	99	35.5%	18,870	168	431	697	6.9%	450	11	36	91	30.7%	1,362	56	73	149	20.4%
1985	7,642	253	839	1,319	31.5%	596	60	93	115	45.0%	18,894	148	396	629	6.2%	495	27	61	68	31.5%	1,386	37	77	156	19.5%
1986	7,869	213	844	1,379	31.0%	723	49	79	135	36.4%	18,138	87	250	454	4.4%	483	23	64	84	35.4%	1,340	42	80	154	20.6%
1987	7,660	262	867	1,366	32.6%	671	76	93	115	42.3%	17,828	73	200	394	3.7%	521	22	38	102	31.1%	1,331	29	62	142	17.5%
1988	8,126	301	1,023	1,501	34.8%	793	115	121	133	46.5%	16,784	137	307	588	6.1%	657	25	58	125	31.7%	1,576	25	67	164	16.2%
1989	8,988	358	1,060	1,601	33.6%	805	100	97	130	40.6%	16,270	123	316	567	6.2%	801	42	75	113	28.7%	1,853	47	101	183	17.9%
1990	9,552	372	1,033	1,613	31.6%	933	94	91	124	33.1%	18,673	138	366	562	5.7%	977	47	100	150	30.4%	2,906	81	139	301	17.9%
1991	9,151	374	1,017	1,515	31.8%	1,211	103	149	152	33.4%	19,542	170	444	716	6.8%	956	30	74	138	25.3%	2,901	53	104	280	15.1%
1992	9,438	326	1,020	1,677	32.0%	1,127	93	126	169	34.4%	19,757	196	441	744	7.0%	853	37	75	99	24.7%	2,868	58	125	289	16.5%
1993	7,567	217	774	1,350	30.9%	1,085	71	123	149	31.6%	17,593	119	292	493	5.1%	799	29	64	110	25.4%	2,813	59	120	254	15.4%
1994	7,208	219	743	1,298	31.4%	1,242	97	133	157	31.2%	15,974	178	346	530	6.6%	637	15	35	74	19.5%	2,663	49	86	190	12.2%
1995	6,220	199	654	1,136	32.0%	1,156	97	141	148	33.4%	15,656	142	341	513	6.4%	696	30	34	90	22.1%	2,543	40	98	231	14.5%
1996	5,413	114	524	965	29.6%	821	47	78	103	27.8%	15,244	85	251	416	4.9%	489	16	43	66	25.6%	2,936	60	126	241	14.5%
1997	5,056	177	516	939	32.3%	723	73	107	66	34.0%	13,982	101	285	457	6.0%	439	17	41	55	25.7%	2,488	75	121	268	18.6%
1998	5,815	166	613	1,200	34.0%	939	64	123	108	31.4%	16,051	158	376	534	6.7%	490	21	36	73	26.5%	2,753	66	147	229	16.1%
1999	6,673	195	744	1,284	33.3%	1,173	95	118	148	30.8%	17,197	235	549	738	8.9%	669	26	71	93	28.4%	3,083	90	193	350	20.5%
2000	8,186	224	844	1,373	29.8%	1,304	92	147	144	29.4%	20,956	250	564	743	7.4%	599	24	52	83	26.5%	3,795	183	292	487	25.3%
2001	8,704	273	865	1,588	31.3%	1,499	170	172	169	34.1%	23,422	390	765	973	9.1%	591	46	61	81	31.8%	4,363	196	331	637	26.7%
2002	9,761	288	1,048	1,741	31.5%	1,767	197	213	197	34.4%	27,078	421	930	1,179	9.3%	857	59	90	105	29.6%	4,622	218	381	770	29.6%
2003	10,265	249	1,030	1,910	31.1%	1,721	180	155	198	31.0%	29,509	296	651	1,001	6.6%	793	68	112	105	35.9%	4,744	294	391	694	29.1%
2004	9,097	280	997	1,695	32.7%	1,742	179	185	201	32.4%	27,951	484	1,015	1,335	10.1%	829	87	105	114	36.9%	4,163	292	483	769	37.1%
2005	9,716	282	1,011	1,861	32.5%	1,884	206	184	243	33.6%	33,214	734	1,360	1,748	11.6%	850	83	109	122	36.9%	4,063	263	446	753	36.0%
2006	9,203	335	1,101	1,817	35.3%	1,684	142	189	240	33.9%	32,309	588	1,247	1,436	10.1%	610	71	81	83	38.5%	3,686	225	342	686	34.0%
2007	9,814	357	1,122	2,032	35.8%	2,023	217	238	268	35.7%	30,719	300	690	1,079	6.7%	784	79	93	123	37.6%	4,475	222	514	967	38.1%
2008	10,335	372	1,171	2,029	34.6%	2,159	219	249	274	34.4%	33,629	578	1,204	1,617	10.1%	891	70	105	162	37.8%	4,157	244	440	865	37.3%
2009	10,680	250	1,029	1,953	30.3%	2,415	255	292	324	36.1%	35,190	432	1,001	1,485	8.3%	929	58	97	153	33.2%	4,914	262	552	1,013	37.2%
2010	10,938	268	993	1,966	29.5%	2,550	245	232	359	32.8%	35,023	496	1,051	1,566	8.9%	940	76	120	162	38.1%	4,613	245	520	1,014	38.6%
2011	12,054	337	1,189	2,135	30.4%	2,657	271	252	323	31.8%	36,299	417	918	1,542	7.9%	889	64	110	133	34.5%	5,516	292	657	1,222	39.4%
2012	11,663	218	1,063	2,054	28.6%	2,902	330	296	340	33.3%	34,792	418	972	1,466	8.2%	1,044	76	114	194	36.8%	6,006	395	748	1,424	42.7%
Összes	321,096	10,836	35,620	59,040	32.9%	45,208	4,508	4,855	6,062	34.1%	892,337	10,668	23,453	33,730	7.6%	23,991	1,433	2,454	3,664	31.5%	104,902	4,371	8,088	15,527	26.7%
	Érmes: 105,496					Érmes: 15,425					Érmes: 67,851					Érmes: 7,551					Érmes: 27,986				

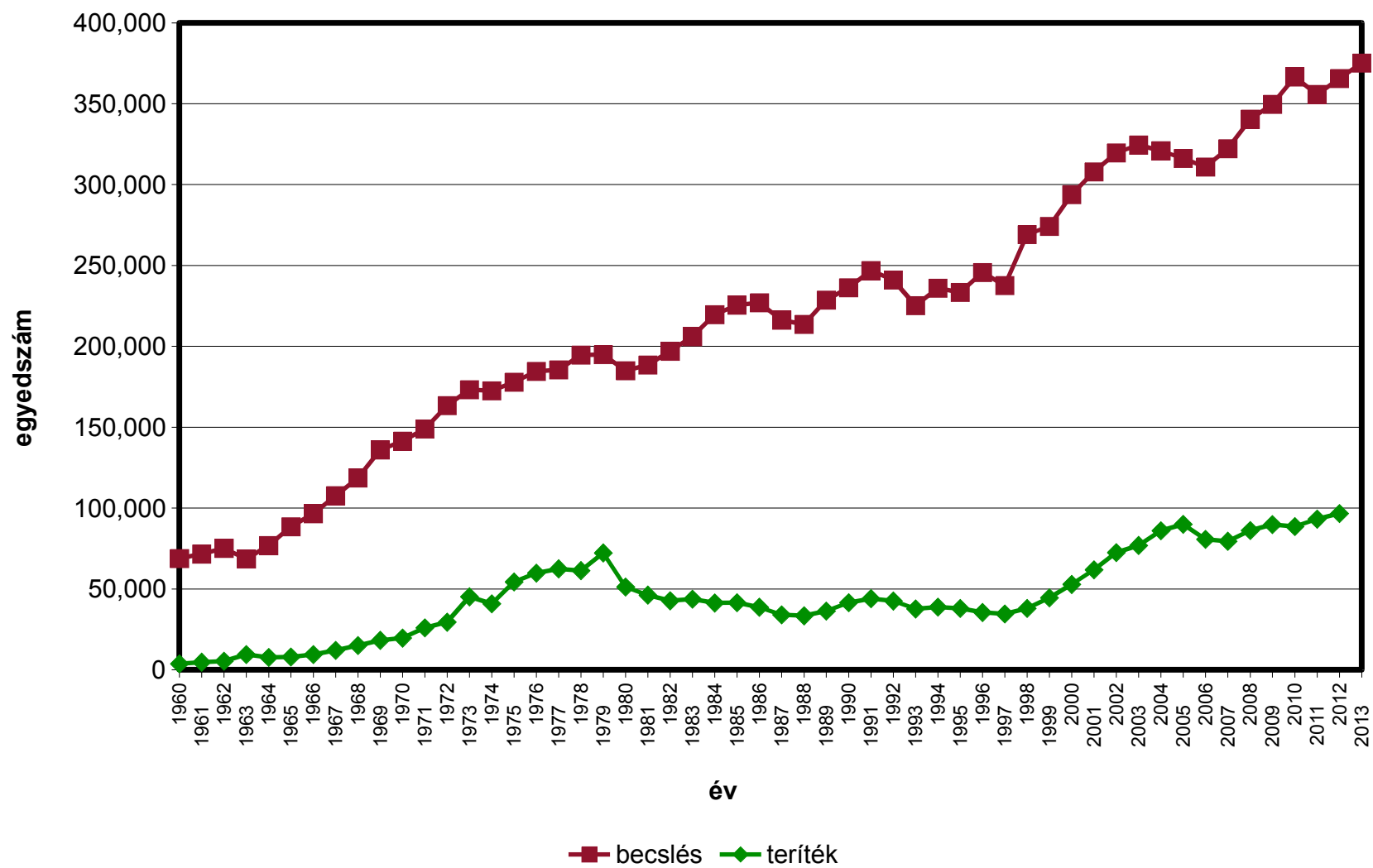
Gímszarvas



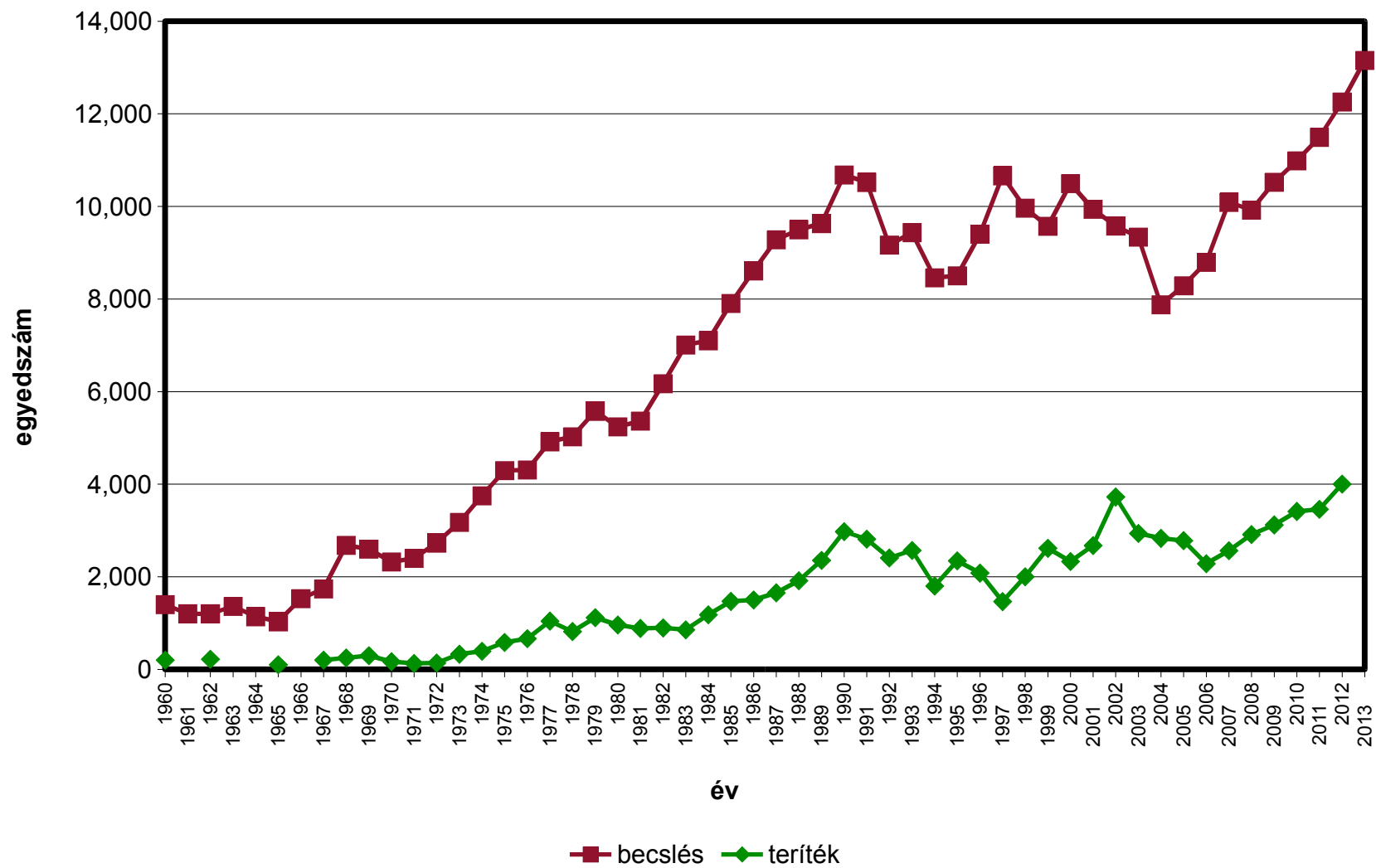
Dámszarvas



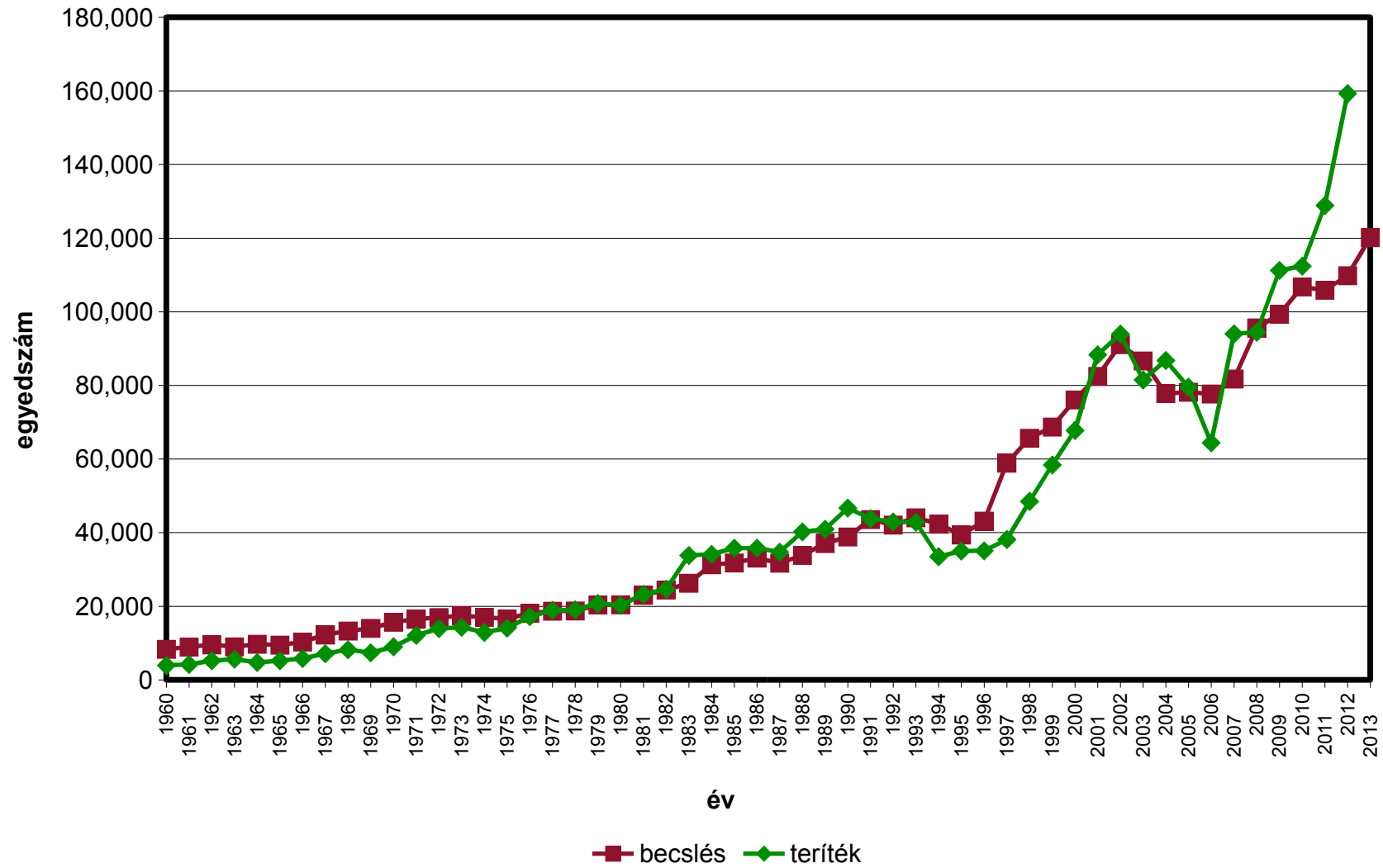
Öz



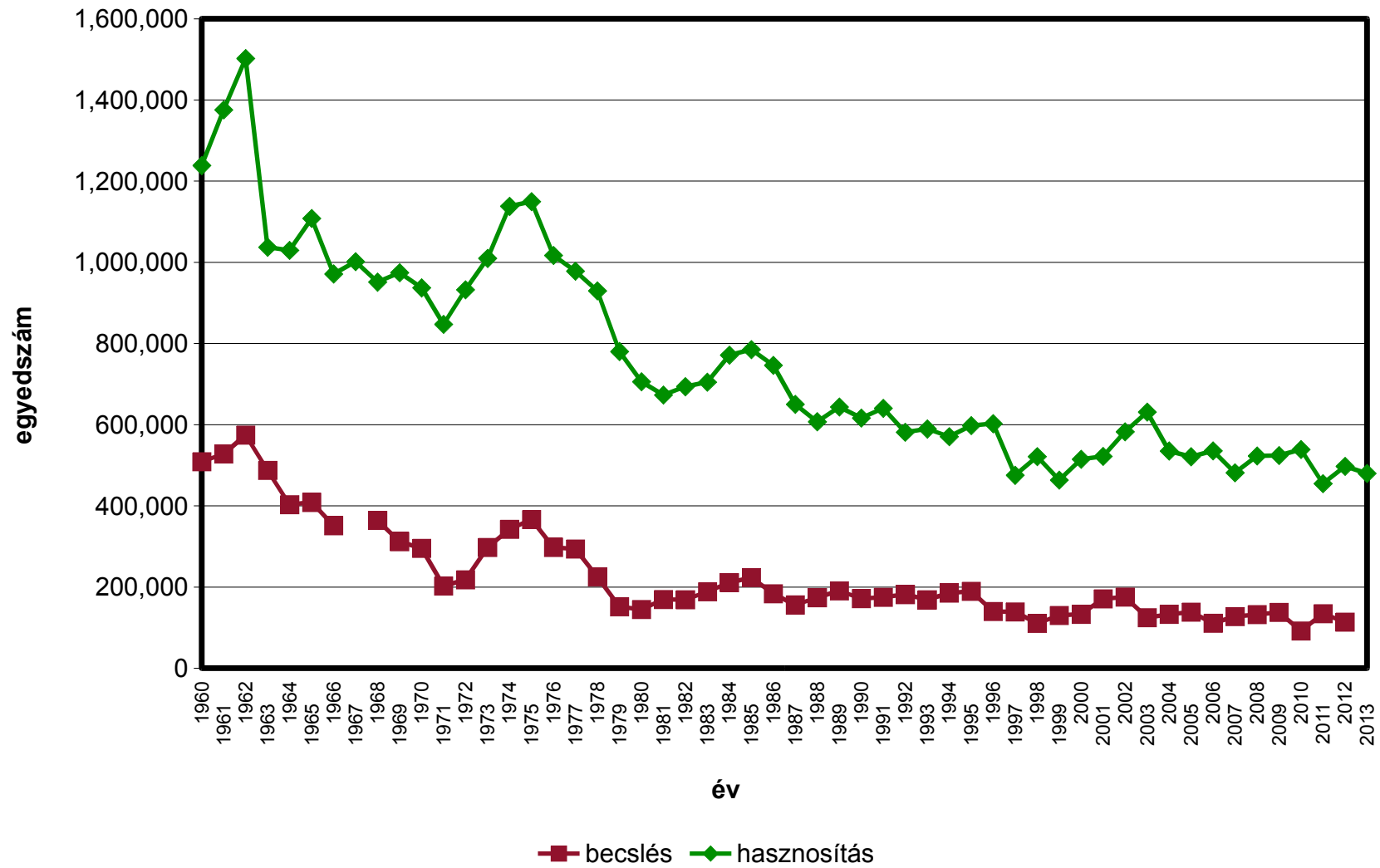
Muflon



Vaddisznó

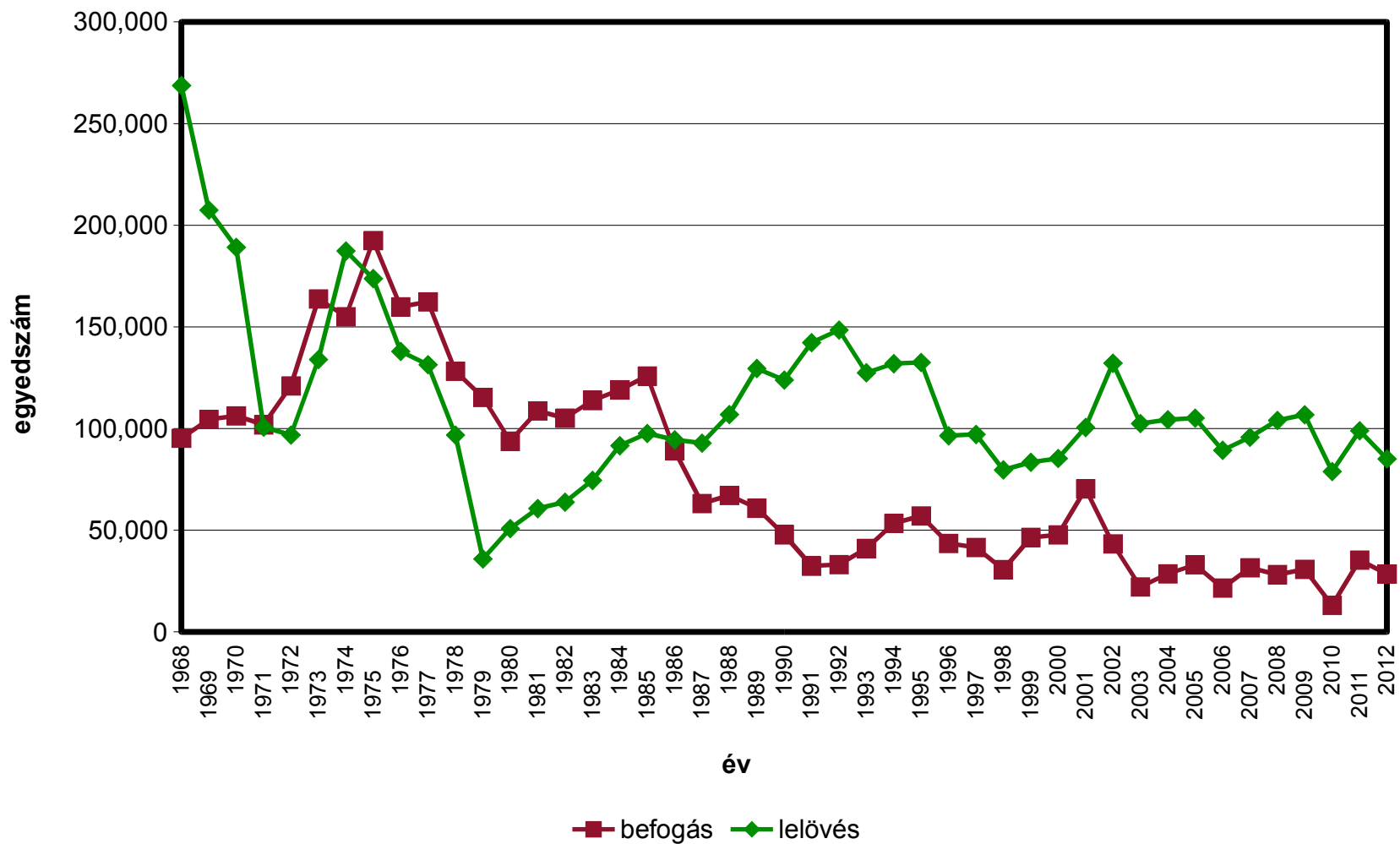


Mezeinyúl



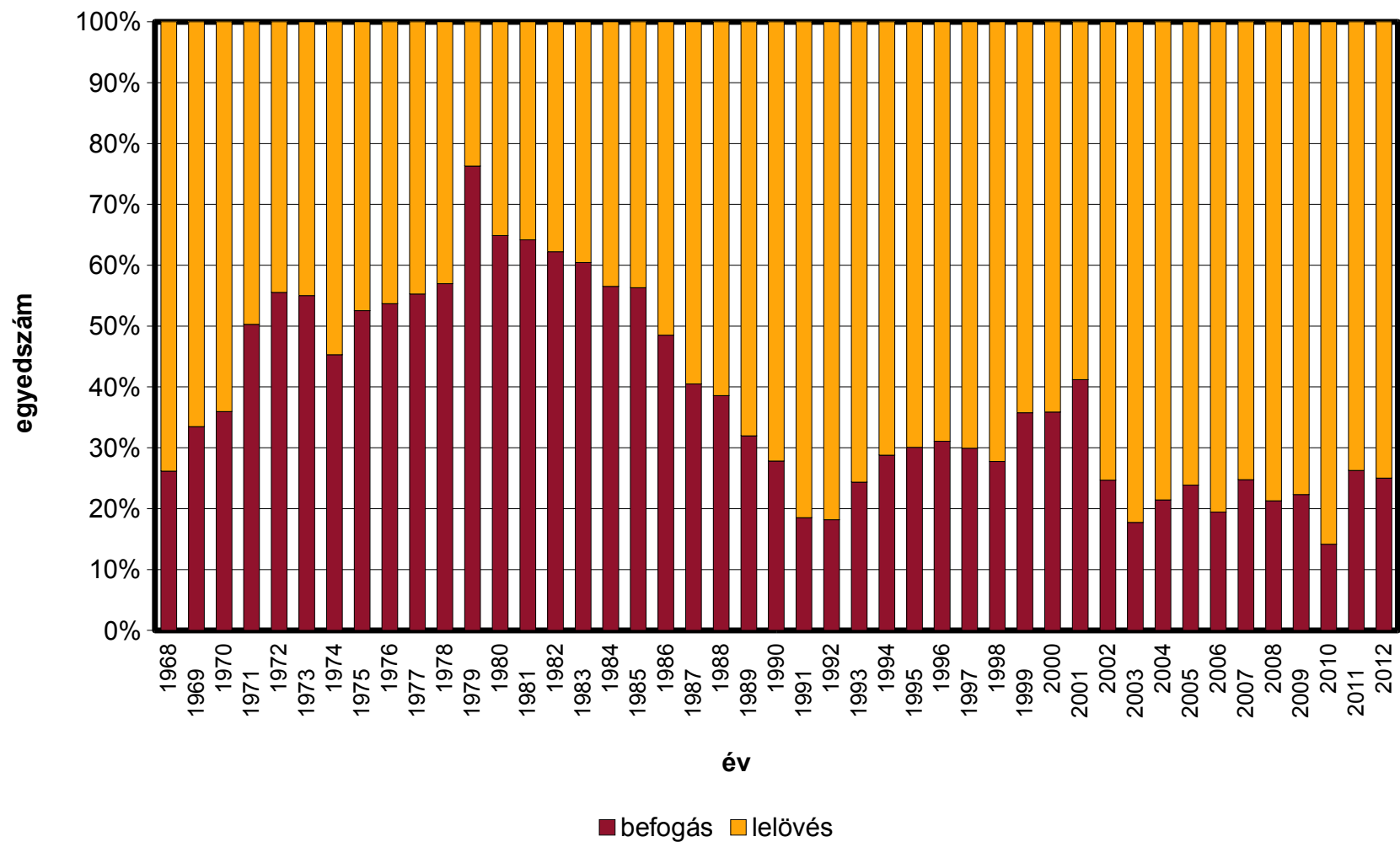
Mezeinyúl

Lelövés és befogás

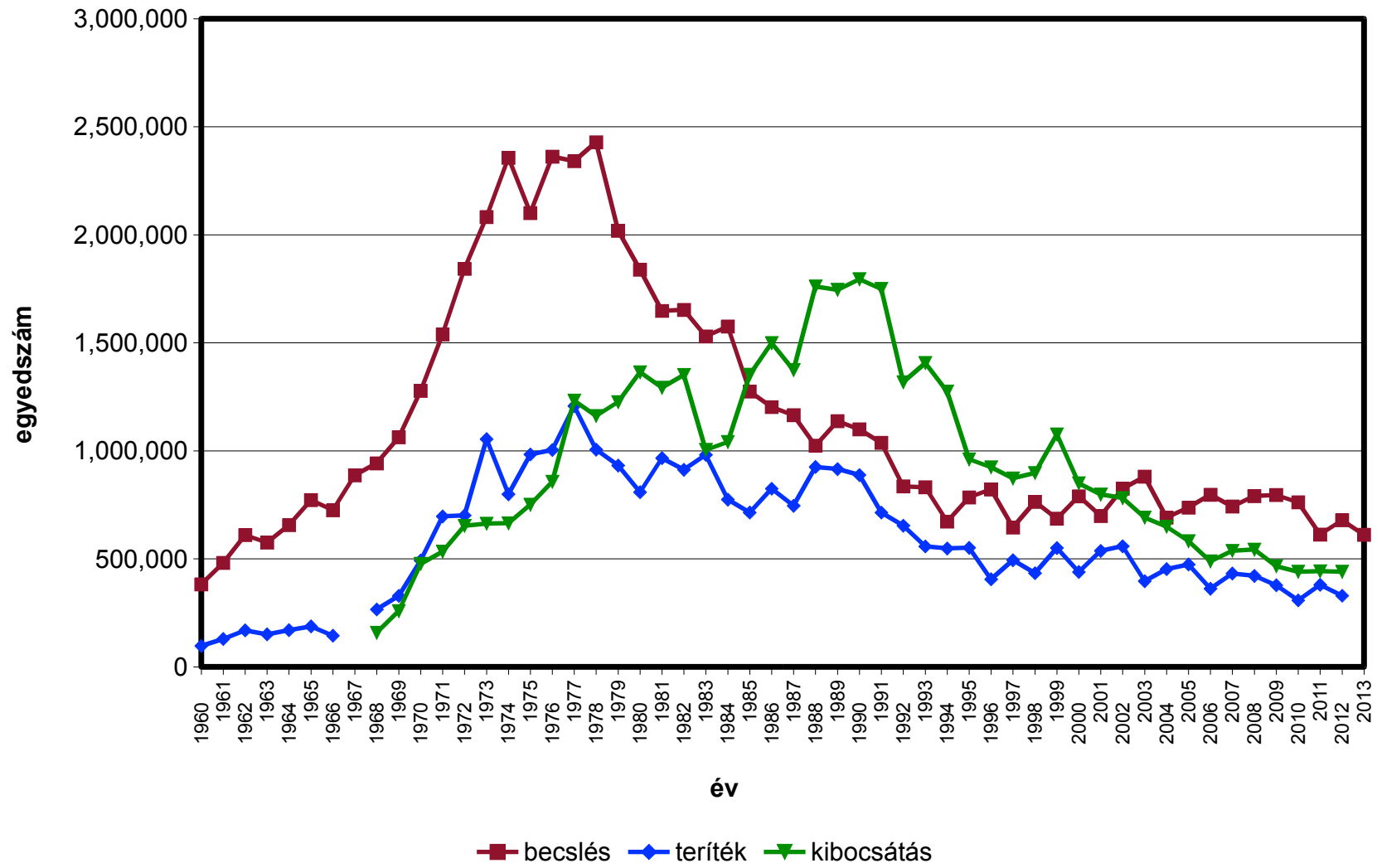


Mezeinyúl

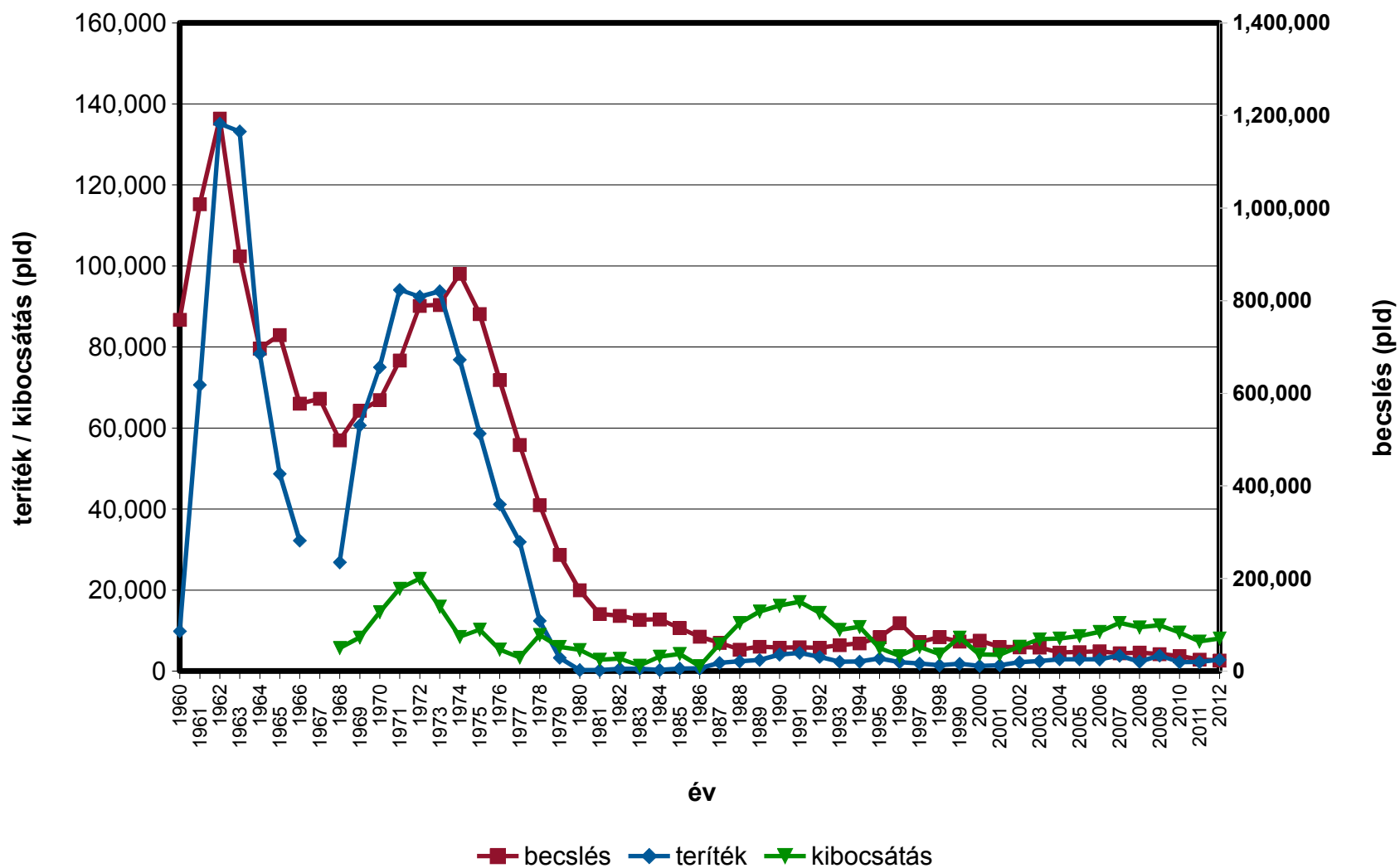
Lelövés és befogás



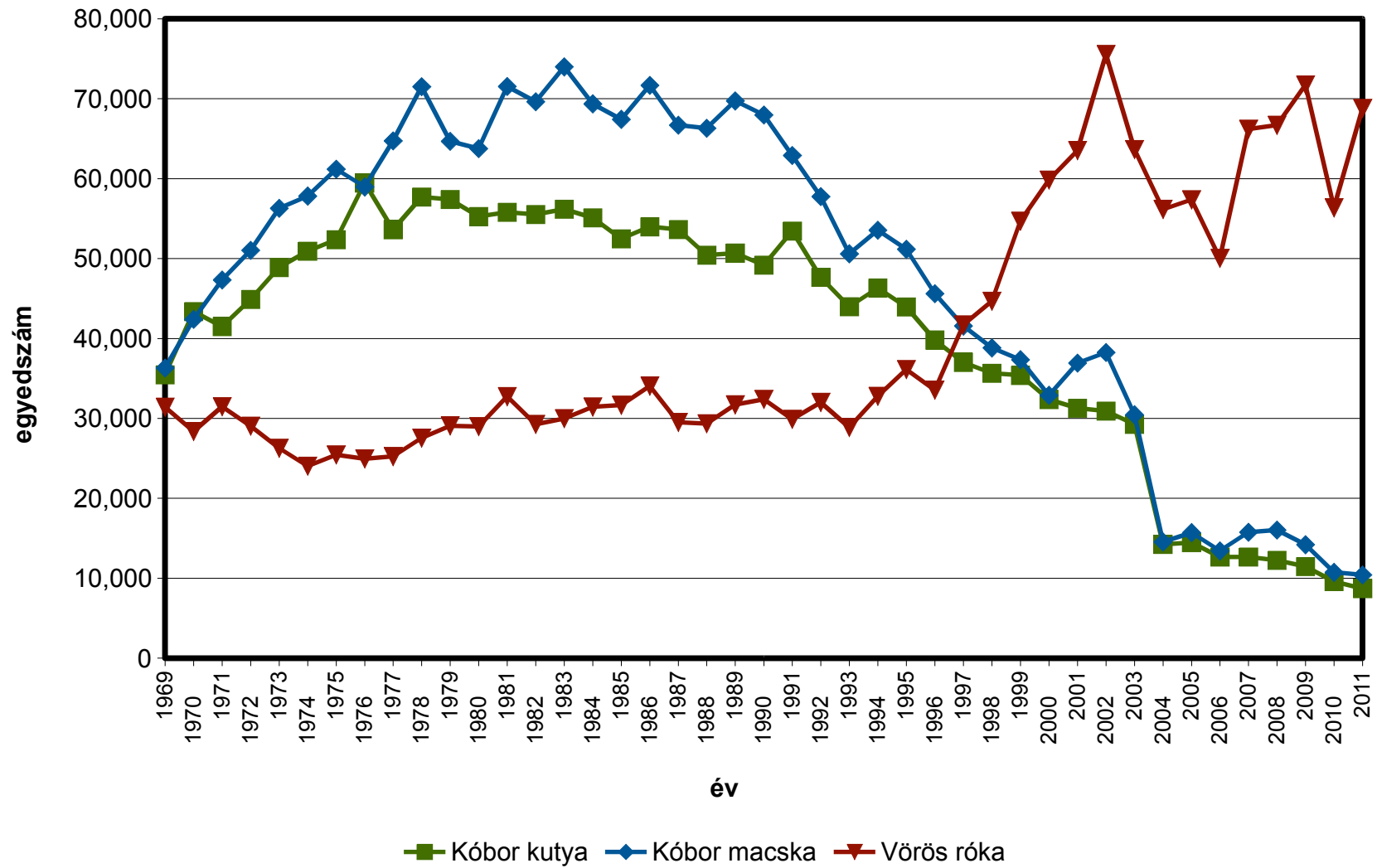
Fácán



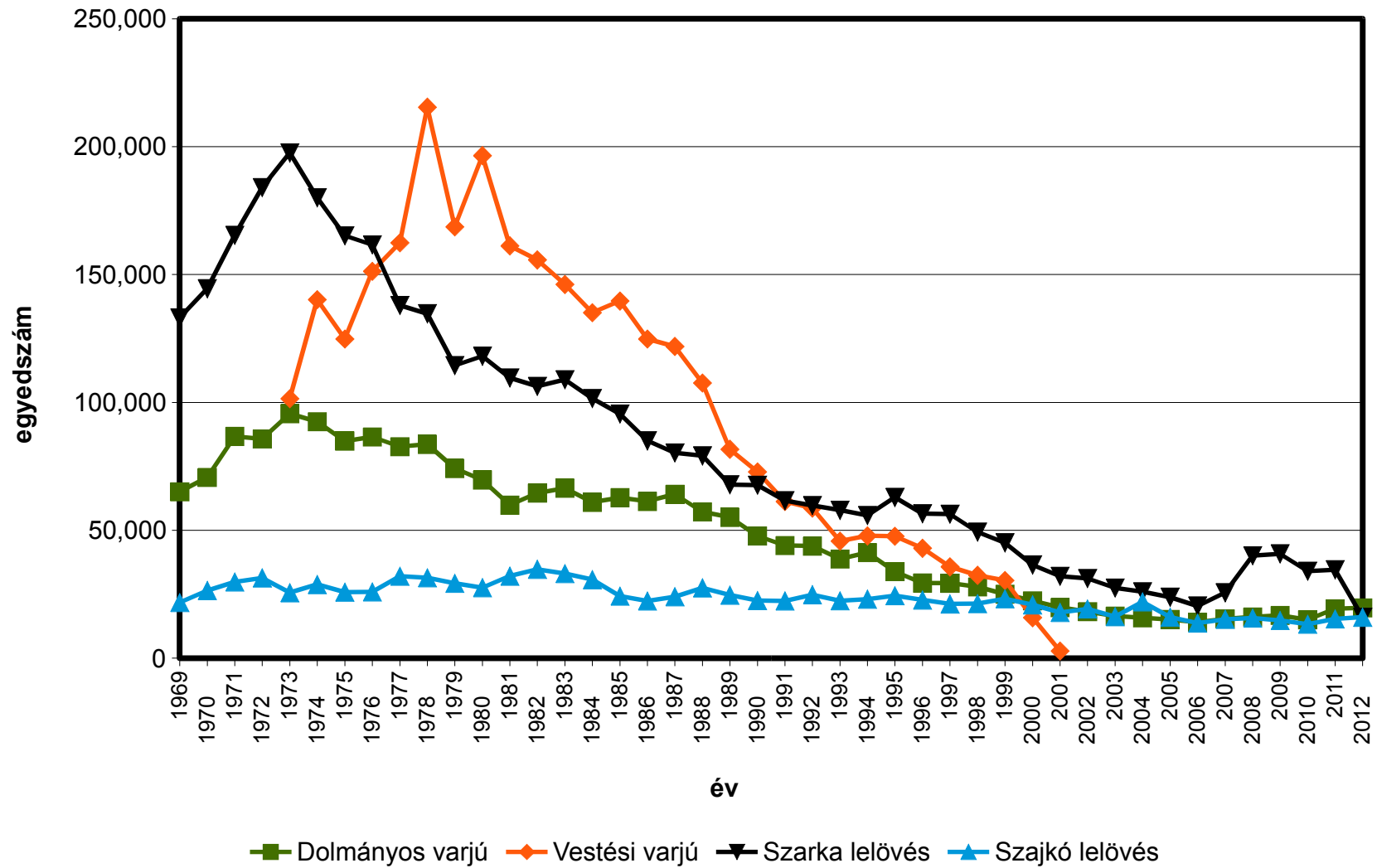
Fogoly



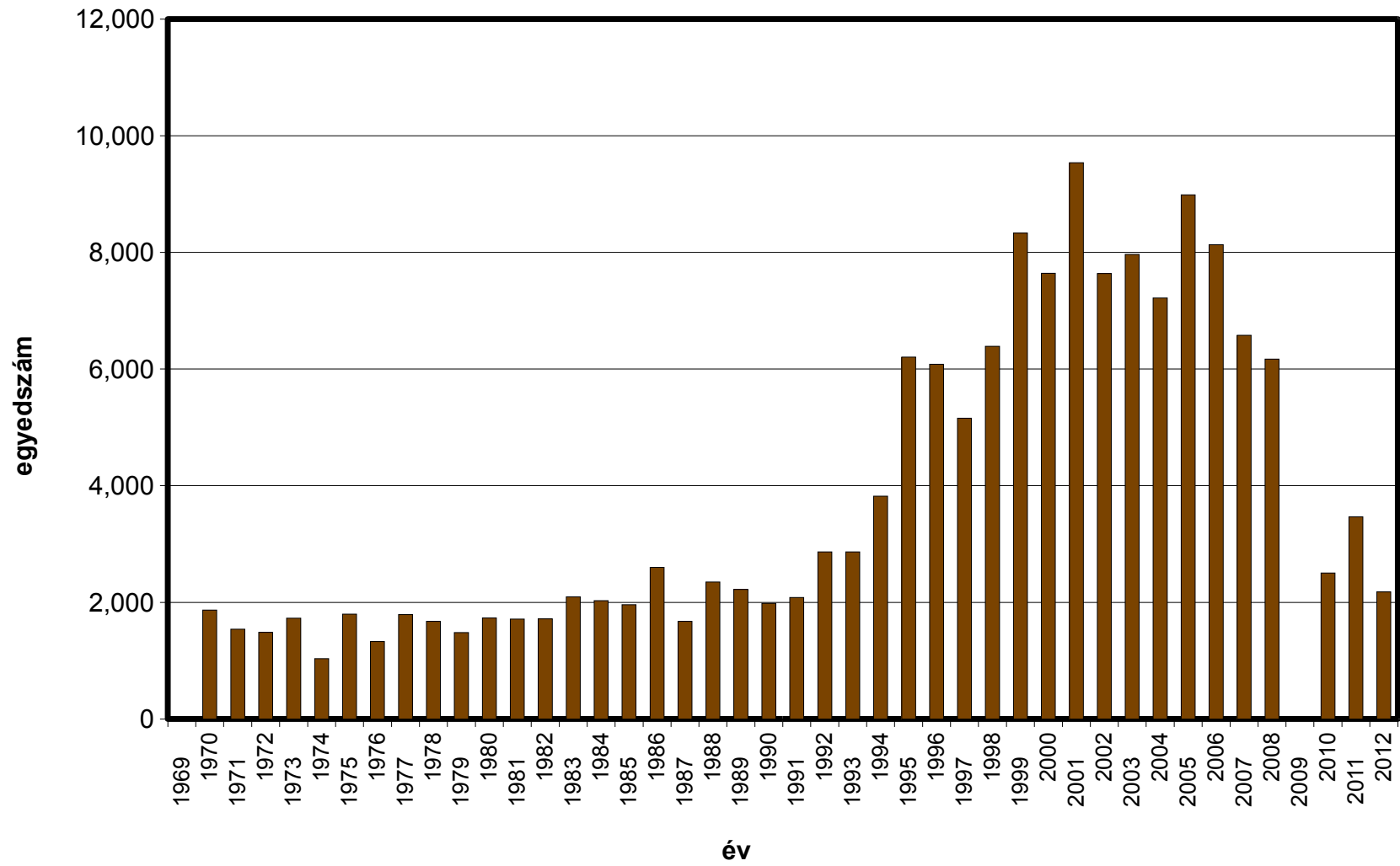
Szőrmés kártevők



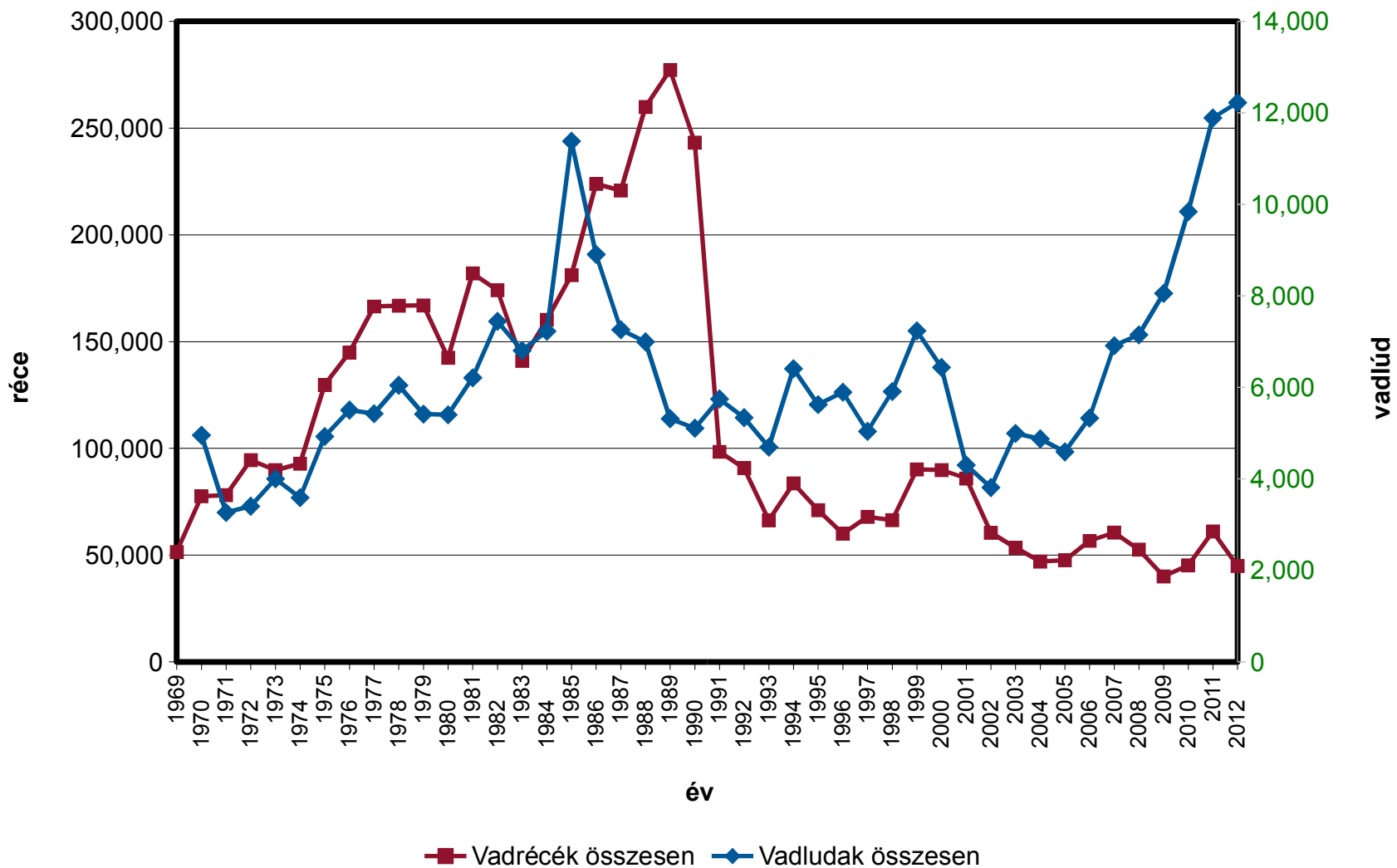
Rablómadarak



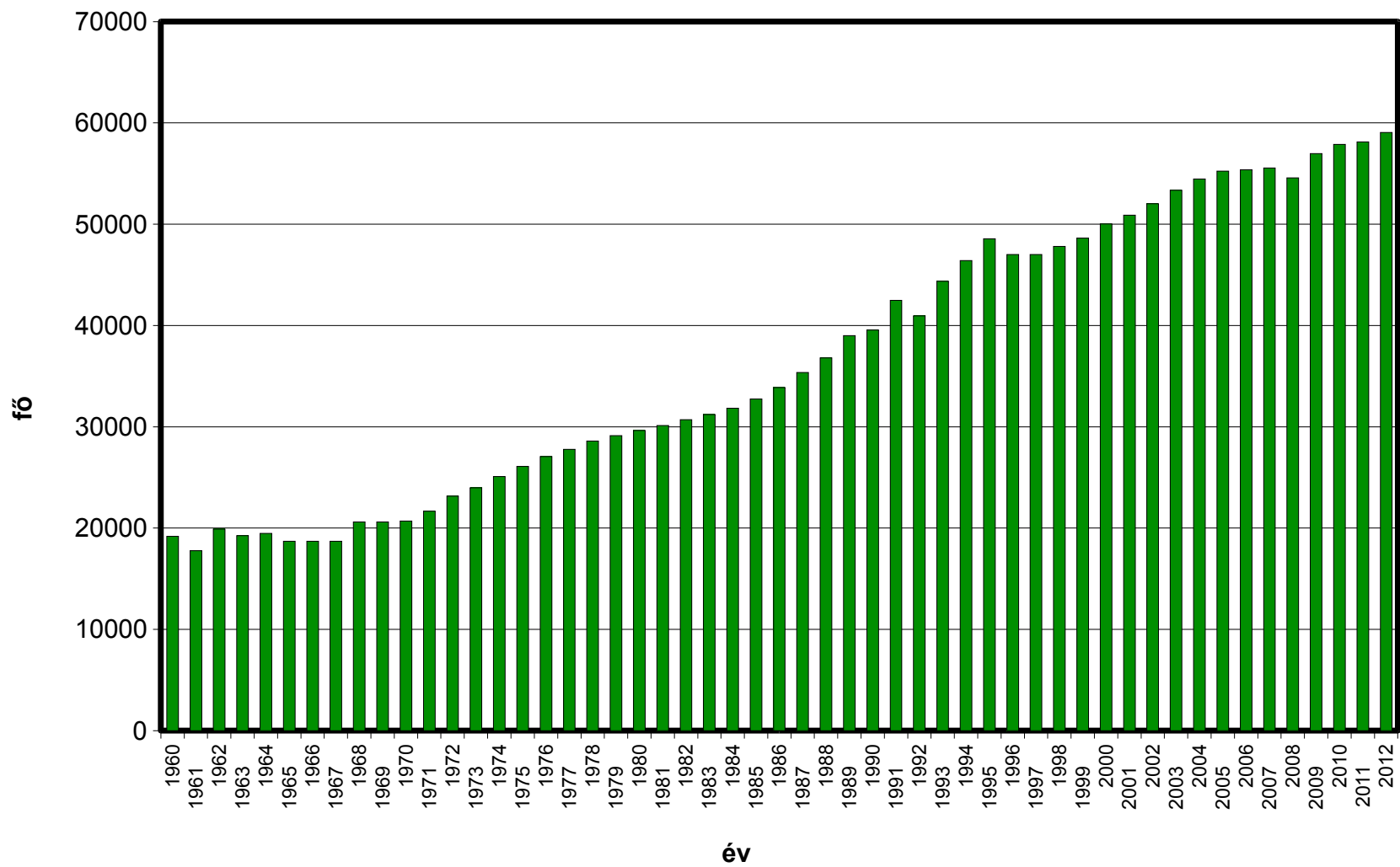
Erdei szalonka



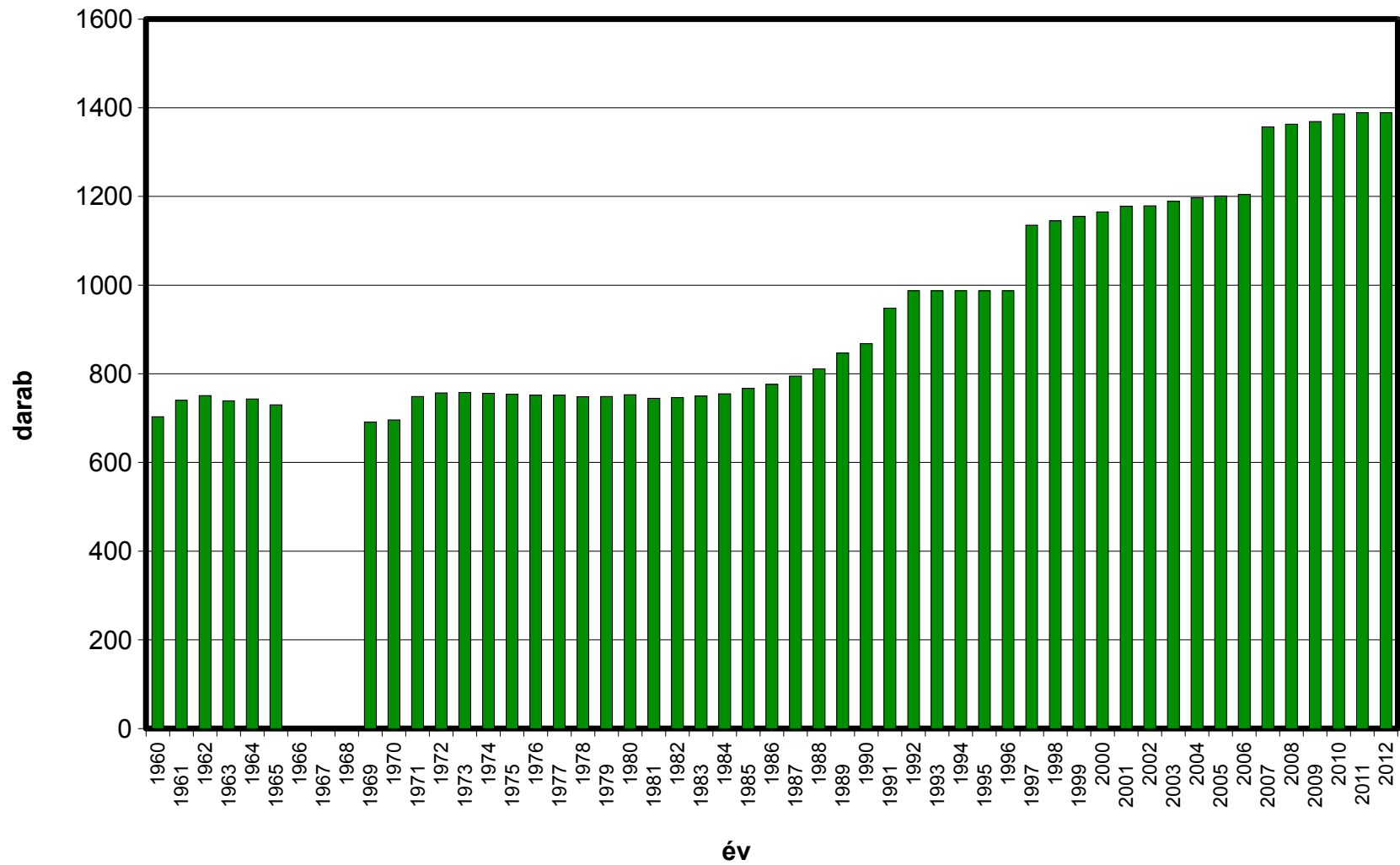
Vadrécék és vadludak összesen



Vadászok létszáma

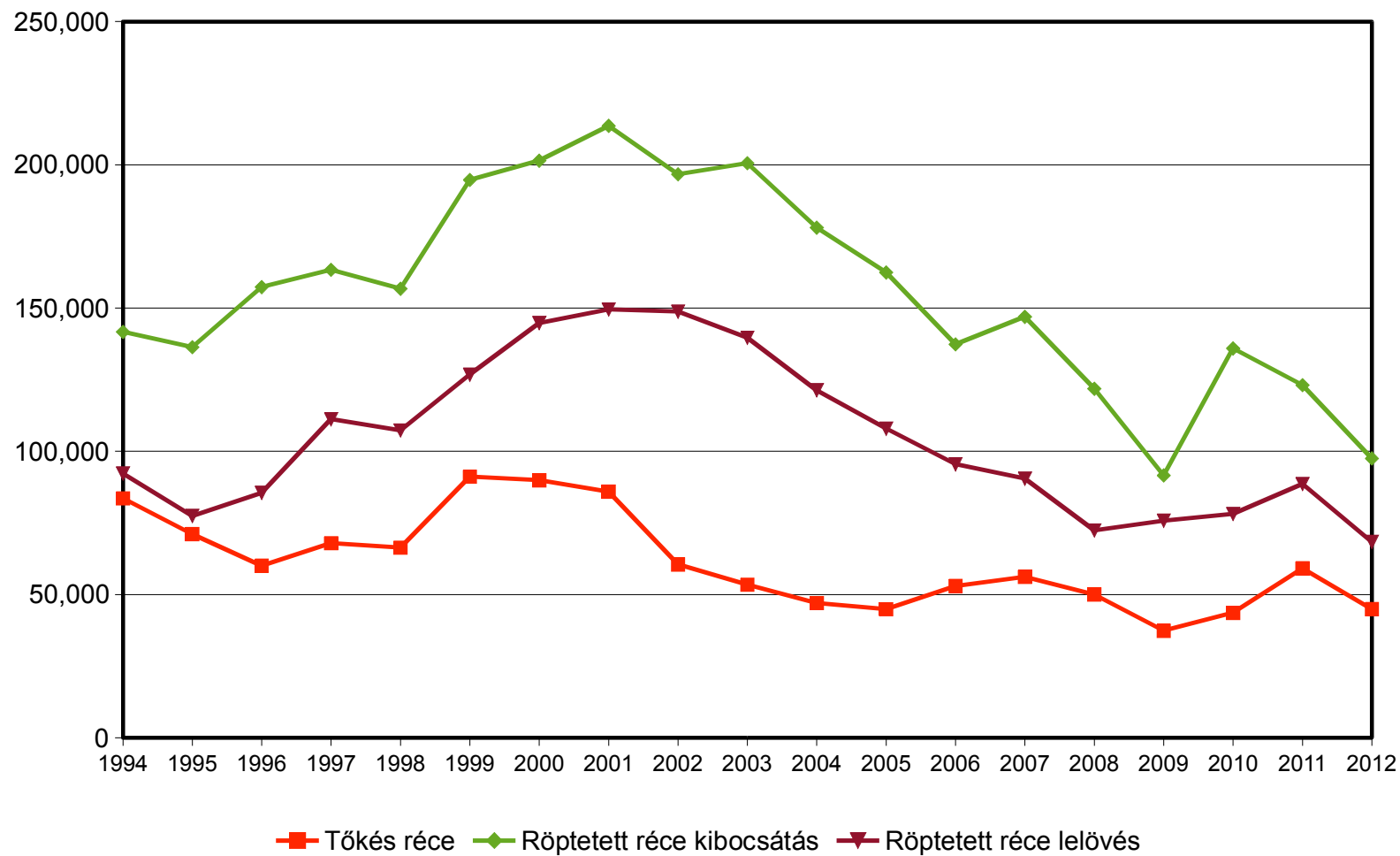


Vadgazdálkodási egységek száma

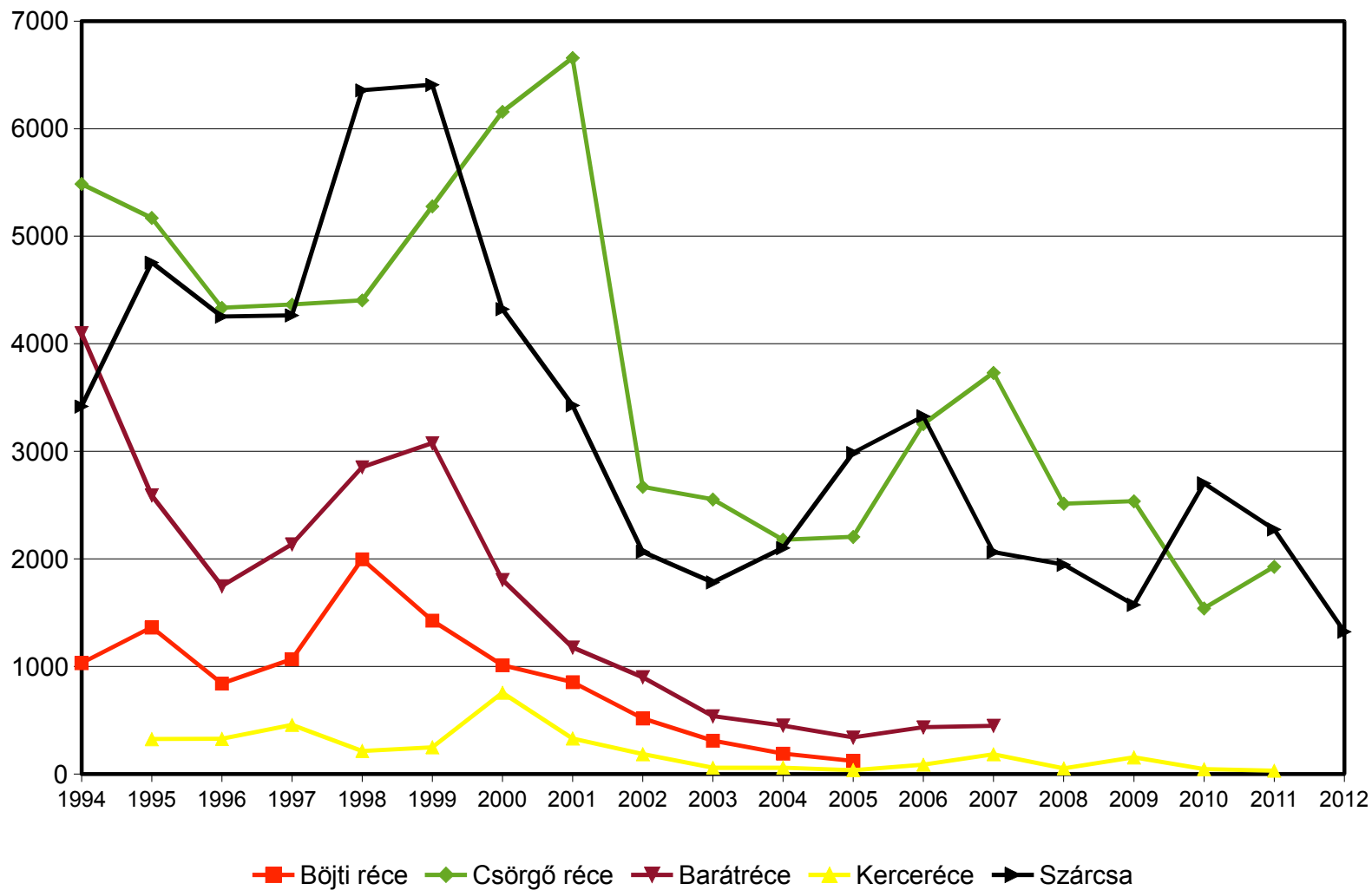


Tőkés réce zsákmánya

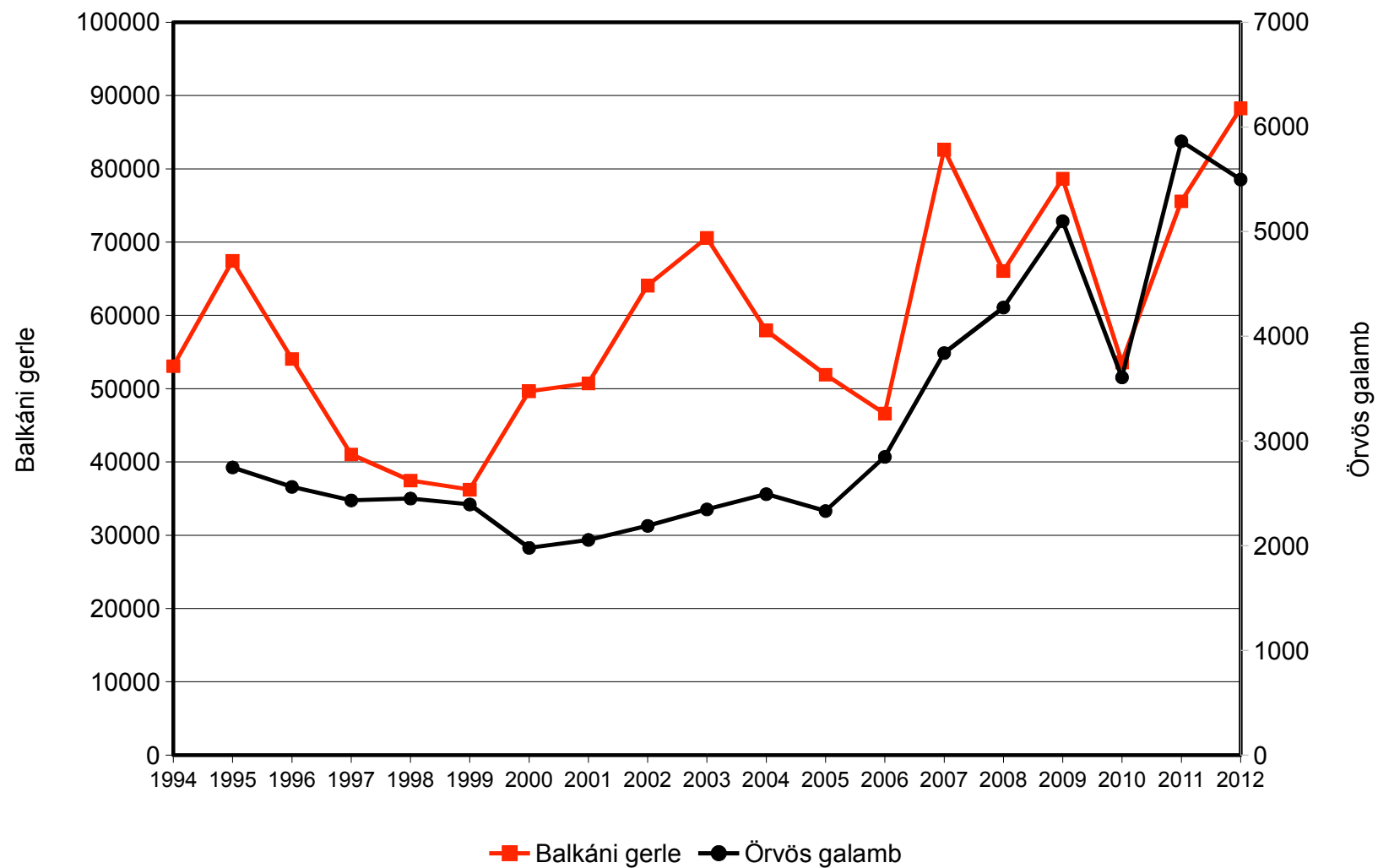
Szabad területi és kibocsátott



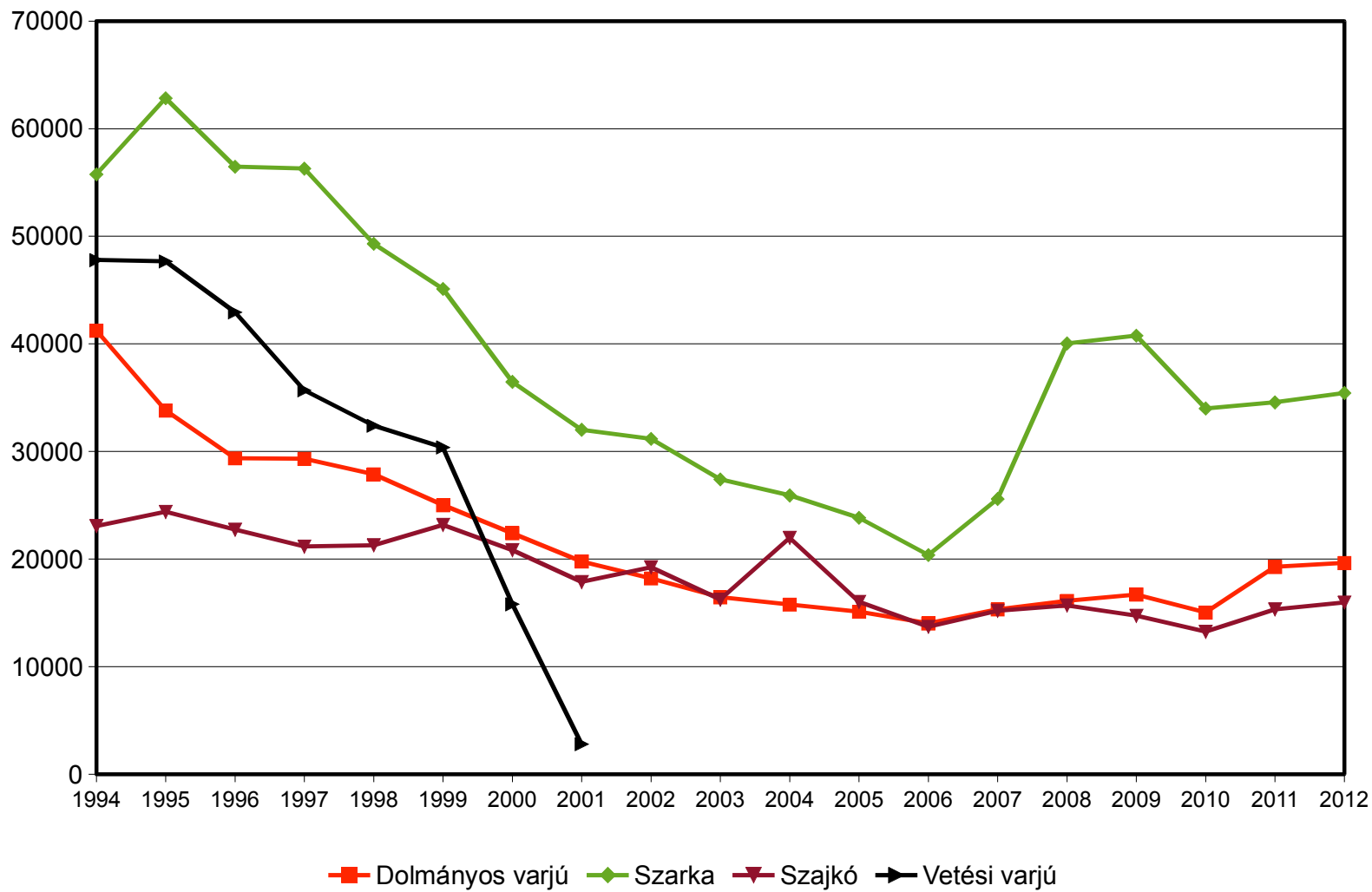
Récék és szárcsa zsákmány



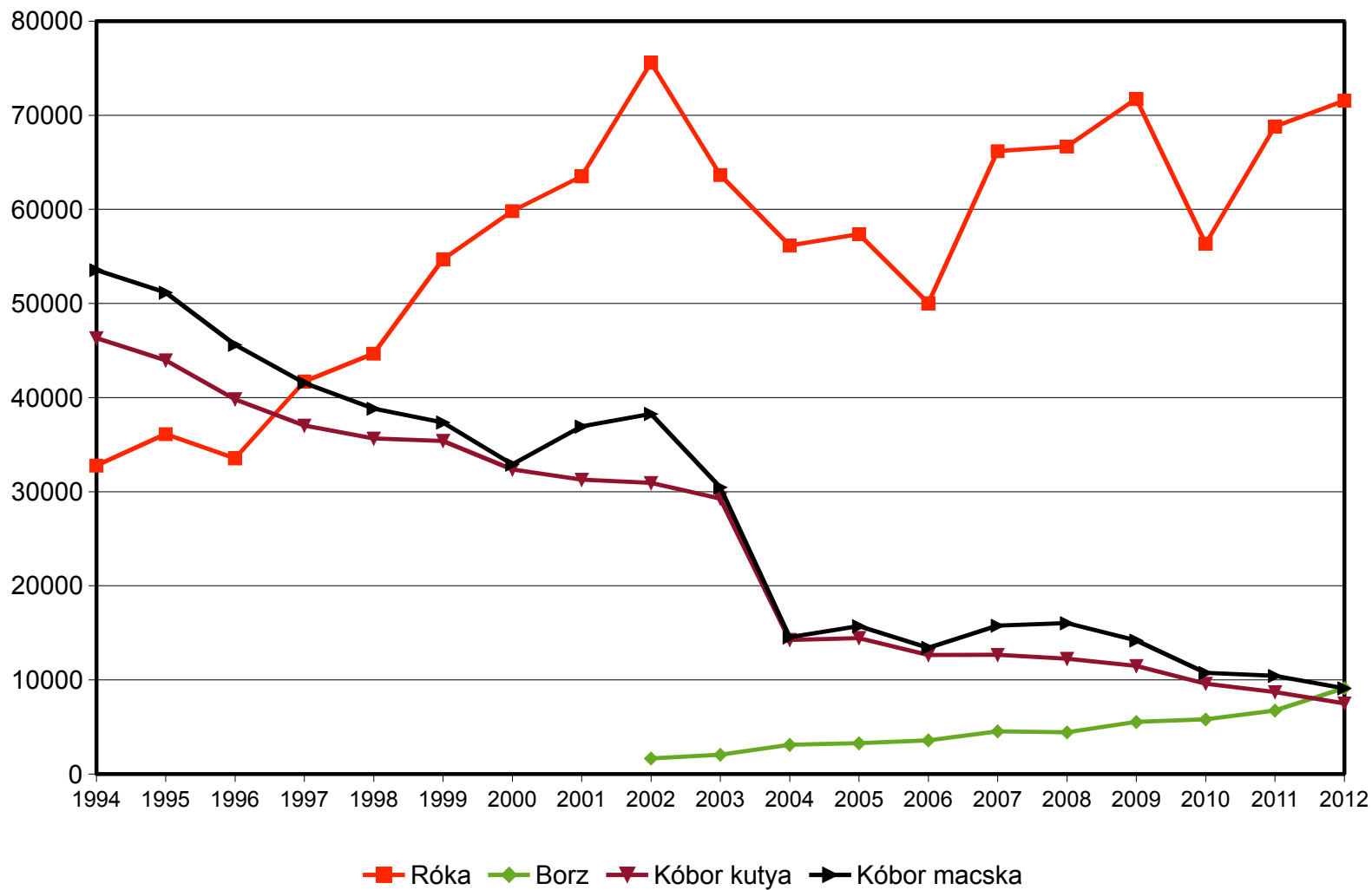
Vadászható galambok zsákmánya



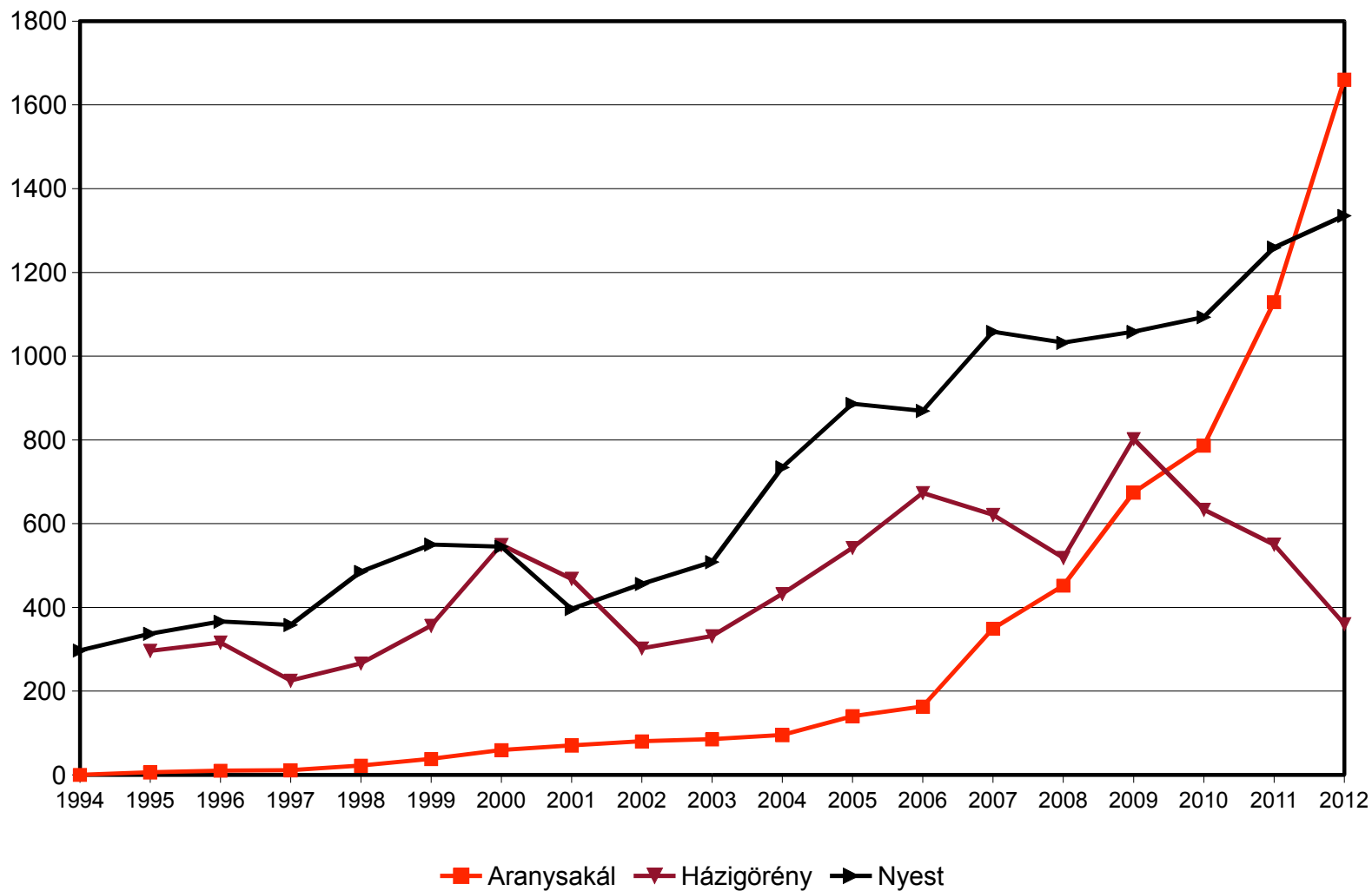
Rablómadarak zsákmány



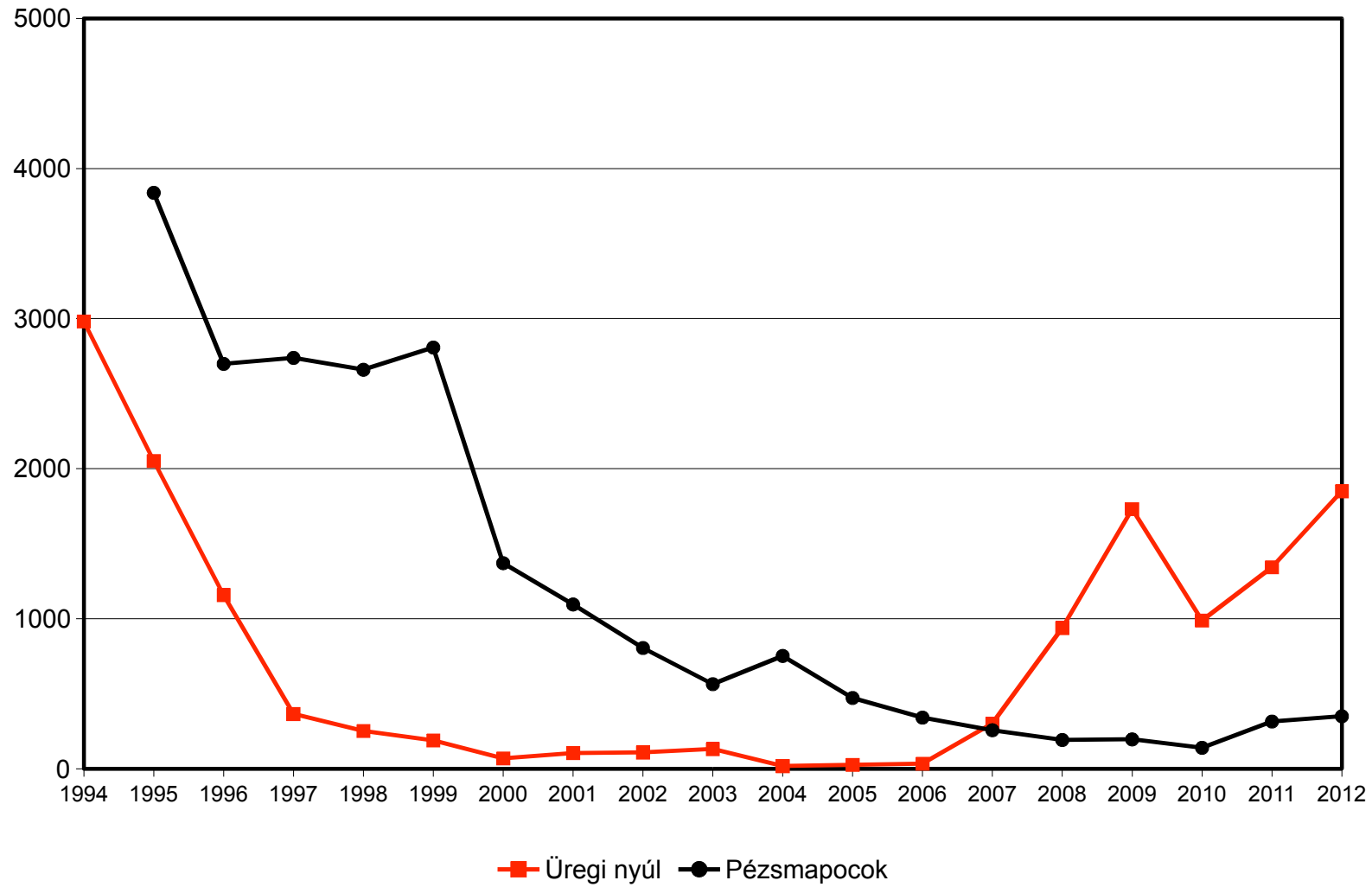
Szőrmés kártevők zsákmány



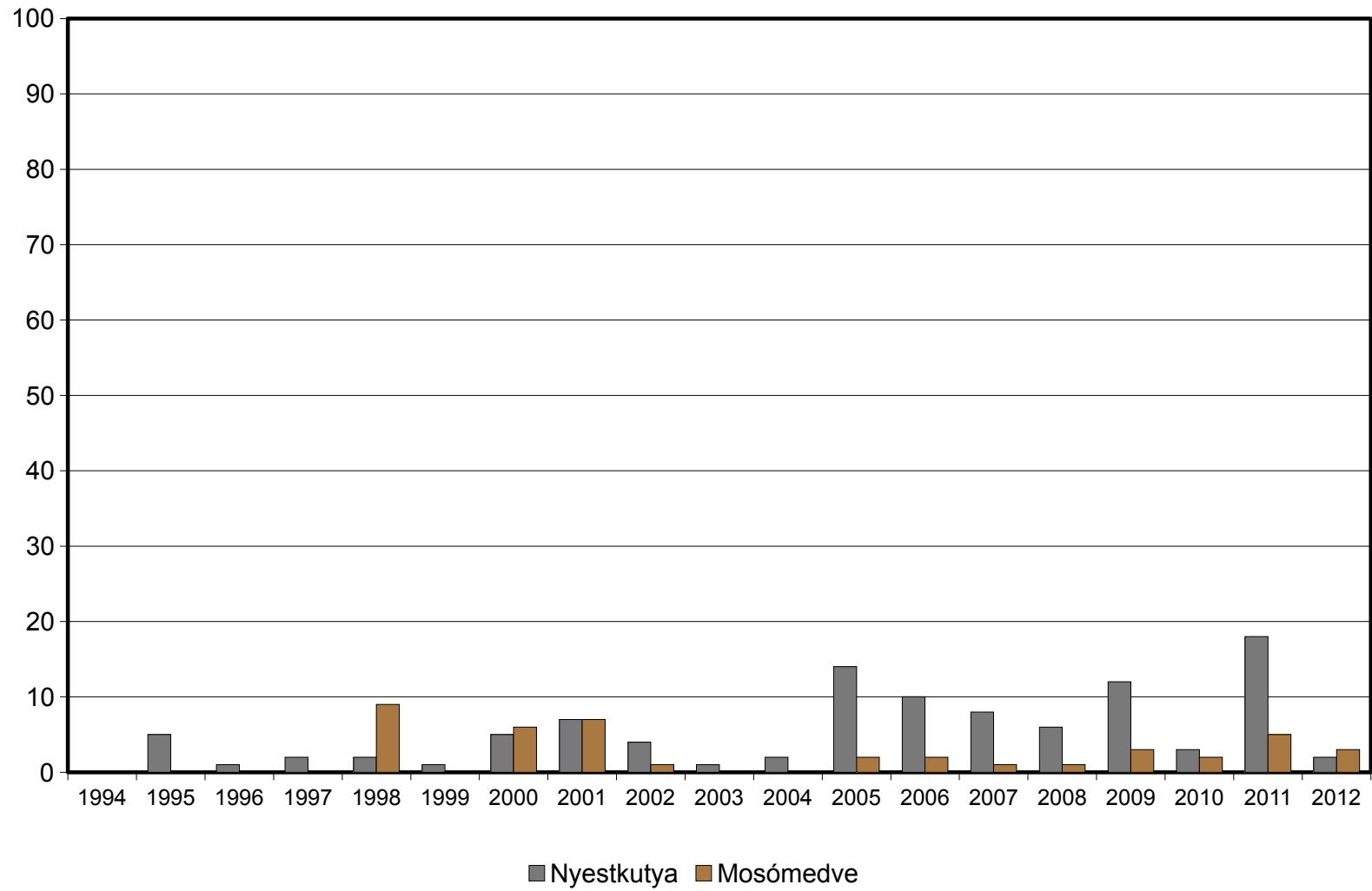
Szőrmés kártevők zsákmánya



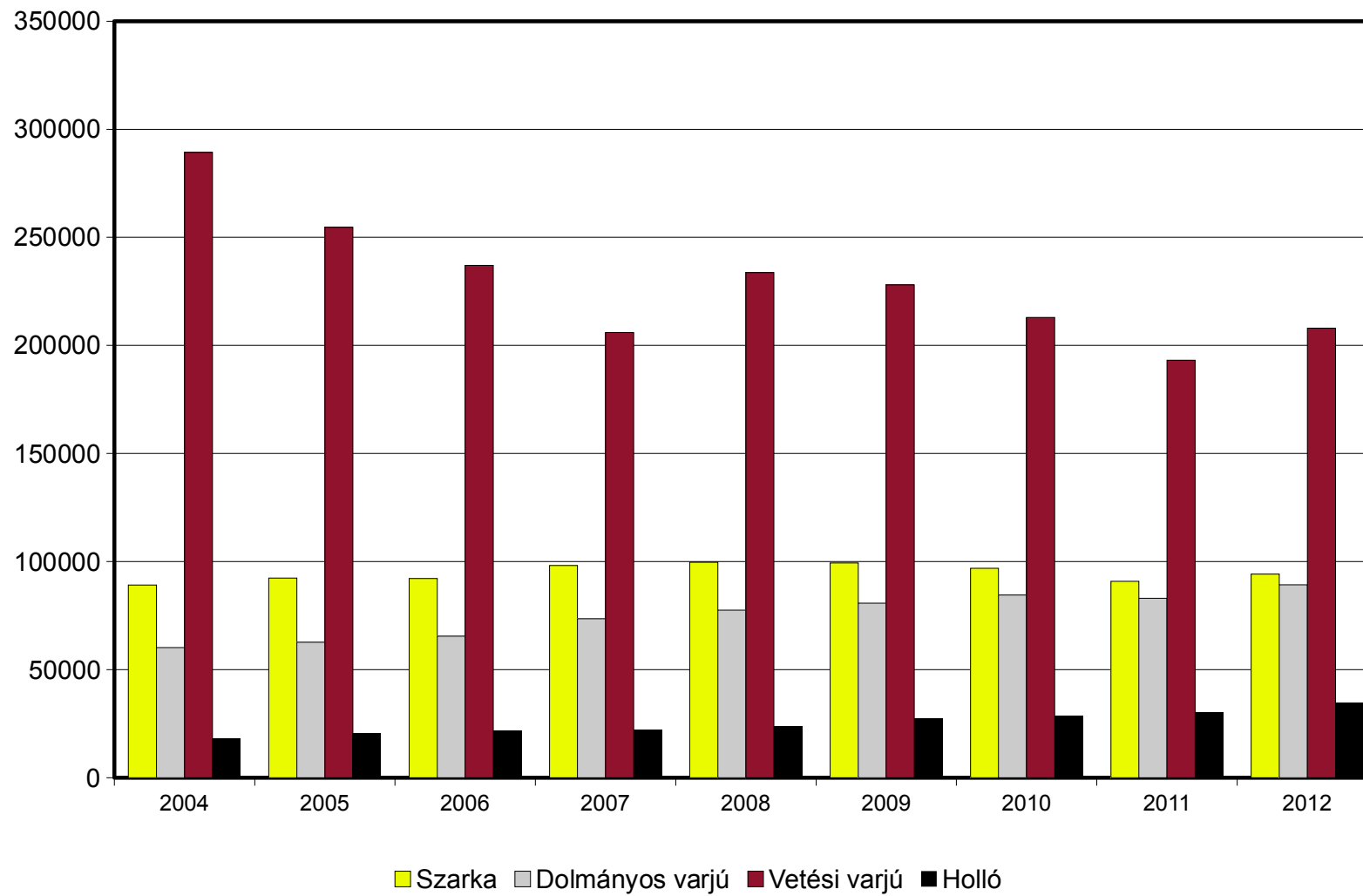
Üregi nyúl és pézsmapocok zsákmánya



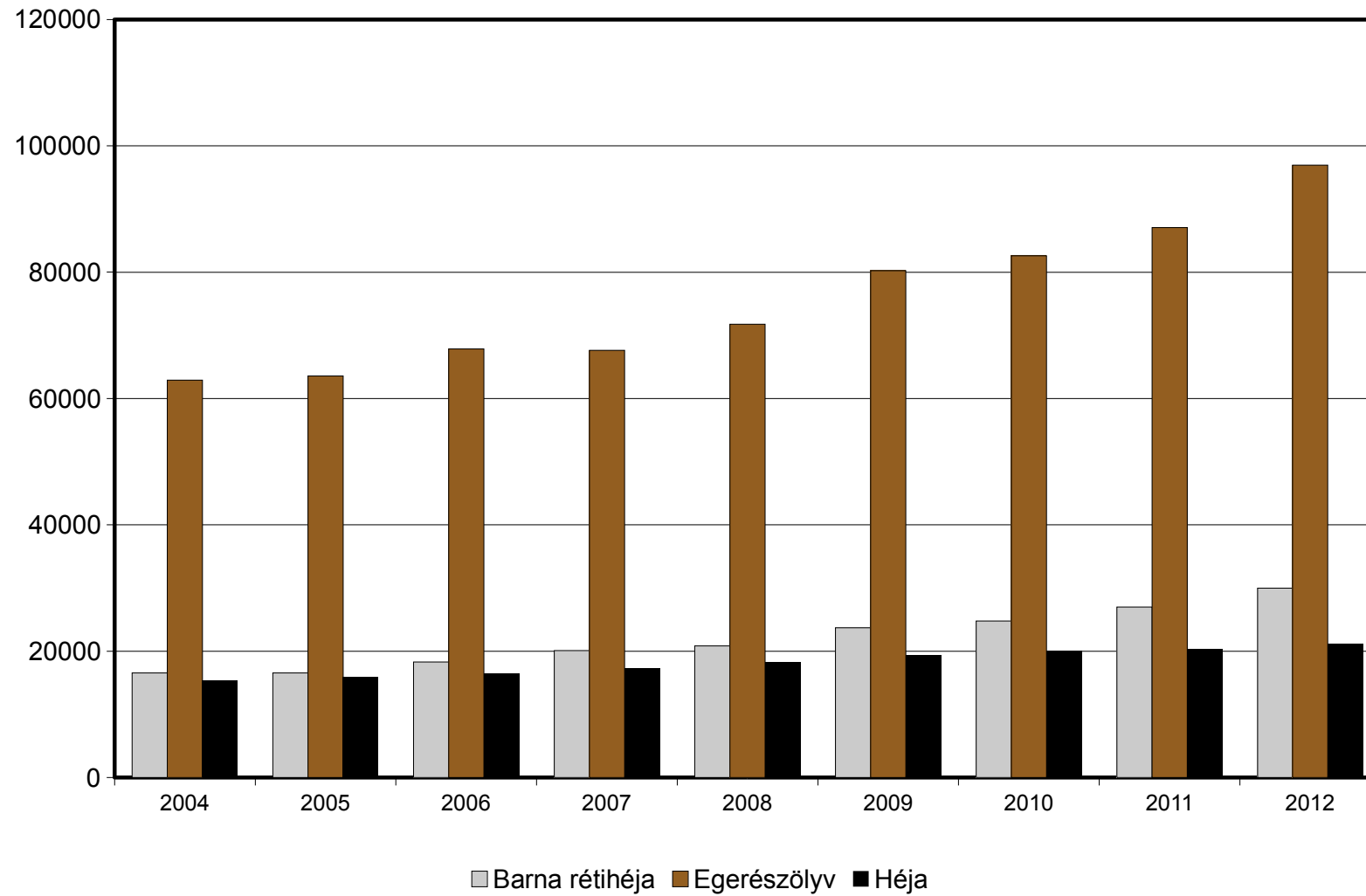
Mosómedve és nyestkutya zsákmánya



Rablómadarak jelentett állomány



Ragadozó madarak jelentett állomány



Ragadozó emlősök jelentett állománya

